

Listen and Feel

SOUNDSTREAM[®]



T E C H N O L O G I E S



Anniversary

2011
PRODUCT
CATALOG

www.soundstream.com



The only factor that remains "unchanged" in the electronics industry is "change". Our business has grown mainly by technological innovations and unsurpassed customer loyalty.

Our approach is simple: continue to increase the value of products for our customers. Each year we offer products with features that supersede previous models, as well as your expectations. We apply the most innovative ideas to our designs and features up to the last possible moment, insuring nothing is overlooked.

In 2011, we again launch revolutionary new technologies that will influence the mobile electronics industry for years to come. Our engineering staff overworked themselves to bring you these exciting new innovations. This year we offer support of larger capacity media storage devices, more formats, higher quality interfaces, and the list goes on... Every model is designed with ease of use in mind. Form and function are blended to create modern products that meet the demands of the everyday user, with looks to kill. Look through this catalog and you will understand how Soundstream is an industry leader.

We are optimistic that 2011 dawns a bright future in the aftermarket in-car entertainment industry, with advancements available only at a Soundstream dealer.

30 years of success would not have been possible without listening to loyal customer feedback, and applying it to our engineering & product development. We look forward to continued years of successful partnerships, ensuring mutual growth & industry leading innovations...

SOUNDSTREAM

TECHNOLOGIES



TEAM SOUNDSTREAM
WINNER OF 19 TROPHIES
AT 2010 DAYTONA
SPRING BREAK NATIONALS



Ben Sales
3rd Place; dB Drag Bass Race - 129.9 Class
2nd Place; IASCA Bass Boxing - Middle Weight Class
2nd Place; IASCA IDBL - Advanced 3 Class
MECA RadicalX - X2 Class
WINNER



James Burkett
2nd Place; dB Drag - Super Street 1-2
WINNER



X3 AMPLIFIERS

Got an oscilloscope? Probably not... How about an ammeter? Doubtful tool... But everybody has or can easily get an adequate Digital Volt Meter for \$20 or so. Many people think they have power from their amps equal to the rating. Very rarely! Seasoned competitors know how to tune their system with a DVM. But they do not measure Wattage, but rather AC Voltage. The new X3 amps are based off of voltage for tuning convenience. The included chart will tell you exactly how much power you can get from the amplifiers at 12V, 14.4V and 16V, and at 1, 2, and 4 ohms, and even at 1%, 5% and 10% THD! If you are not getting what the chart says you should, you know for a fact that you do not have sufficient power supply in the form of batteries. Or maybe you have a lot higher impedance or enclosure impedance rise than you suspected. Either way, you will know how much power you are getting out of your X3 amplifier and can take the step needed to use the X3 amps to their winning potential. It is that simple...



- Non-regulated MOSFET Power Supply
- Up to 16V Power & 10V Audio Input
- Dual 0ga Input & 8ga Output Terminals
- Strappable w/ 2Ω
- 18dB Low-Pass & Subsonic Crossovers
- 18dB 45Hz Bass Boost
- 180° Phase Control
- Remote Gain Control
- Clear Plexi Glass Bottom Included

X3.71	16 Volts DC			14.4 Volts DC			12 Volts DC			
	THD %	1% THD	5% THD	10% THD	1% THD	5% THD	10% THD	1% THD	5% THD	10% THD
1 Ohm	68.1V (4650w)	69.1V (4780w)	71.9V (5180w)	66.7V (4450w)	67.6V (4580w)	70.4V (4960w)	59.6V (3560w)	60.5V (3670w)	62.8V (3950w)	
2 Ohm	82.5V (3400w)	83.7V (3505w)	86.9V (3780w)	80.5V (3240w)	81.6V (3330w)	84.8V (3600w)	67.9V (2310w)	69.0V (2380w)	71.7V (2570w)	
4 Ohm	84.9V (1805w)	86.3V (1860w)	89.7V (2010w)	83.6V (1750w)	84.8V (1800w)	88.2V (1945w)	71.3V (1270w)	72.3V (1305w)	75.1V (1410w)	

6500 Watt 2-Second Burp Power at 16V and 10%

X3.60	16 Volts DC			14.4 Volts DC			12 Volts DC			
	THD %	1% THD	5% THD	10% THD	1% THD	5% THD	10% THD	1% THD	5% THD	10% THD
1 Ohm	53.4V (2860w)	54.2V (2940w)	56.3V (3180w)	52.7V (2780w)	53.6V (2880w)	55.8V (3115w)	50.5V (2540w)	51.3V (2635w)	53.3V (2840w)	
2 Ohm	64.3V (2070w)	65.3V (2130w)	67.8V (2300w)	61.9V (1920w)	63.0V (1988w)	65.6V (2150w)	51.8V (1344w)	52.5V (1380w)	54.5V (1490w)	
4 Ohm	65.9V (1086w)	66.9V (1120w)	69.3V (1200w)	64.8V (1050w)	65.8V (1085w)	68.6V (1178w)	59.9V (898w)	60.8V (925w)	63.1V (998w)	

4000 Watt 2-Second Burp Power at 16V and 10%

XXX AMPLIFIER

Class D mono-block SPL Competition Amplifiers. Winner of 5 trophies at Daytona Spring Break Nationals!

- Non-regulated MOSFET Power Supply
- Up to 16V Power & 7V Audio Input
- 0ga Input & 8ga Output Terminals
- 24dB Low-Pass & Subsonic Crossovers
- 18dB 40-120Hz Bass Boost
- Remote Gain Control
- Clear Plexi Glass Bottom Included



XXX-15000D	
Channels	1 ch. Class D
RMS @ 2Ω, 14.4V, 5%	9,360
RMS @ 1Ω, 14.4V, 5%	14,800
RMS @ 2Ω, 16V, 5%	10,400
RMS @ 1Ω, 16V, 5%	16,800
Dimensions:	2.75" h x 12.625" w x 32.75" l

X3 SUBWOOFERS



X ³	X3-122	X3-152	X3-182
Burp Power (watts)	95V (9,000w)	100V (10,000w)	105V (11,000w)
RMS Power (watts)	71V (5,000w)	77V (6,000w)	84V (7,000w)
Efficiency (1w/1m dB)	87.98	92.43	92.9
Voice Coil Configuration	4" DVC 2Ω	4" DVC 2Ω	4" DVC 2Ω
Mounting Depth	7.50"	8.5"	10"
Optimum High Tuning (55Hz)	2.25	3.75	5.00

Surrounds are a critical part in the control and linearity of cone movement. As a cone moves forward, the inner part of the surround must stretch more than the outer part of the surround. Over time, this can become an issue. The revolutionary asymmetrical "S-Block" surround is a lot more than just a crazy looking surround. The embossed blocks on the upper roll of the surround actually get wider during full excursion. This avoids fatiguing of the surround and greatly prolongs failure. The smaller outer roll has two functions. First, it allows the driver to yield great transient response. Yes, the drivers actually sound great. Not just for burping! Second, they allow for more excursion that the driver is capable of. In

other words, even when BL=0 and the coil is 100% out of the gap, there is plenty of surround left for mechanical excursion. These new X3 surrounds simply will not tear or limit displacement in any way, period!

Speaking of BL, BL is a measurement of the strength in the magnetic gap for the coil. While the amateur thinks that Xmax is the most important feature of a subwoofer, professionals know that BL is King! The fact is that the ultimate subwoofer will require some key features to make it the very best driver possible; high excursion capabilities, high power handling, a motor design that can clear the coil by 10mm during BL=0, and very high BL. The BL on the new X3 subs is very high and over 28T/M on the 15" and 18".

Reconing subwoofers is not a fun process, especially when you haven't finished the competition yet! The new X3 subs can be taken apart and reassembled in 10 minutes, and drivers can be cured and ready to compete in 15-20 minutes! The new triple spider assembly and clamp gasket can easily be unbolted in just a few minutes. Slip the voice coil jig inside, drop in the recon kit, bolt it down, remove the jig and glue on the dust cap. Voila! Done! No more losing a competition because you blew a woofer in an earlier match during the day...

XXX SUBWOOFERS

Monster subwoofers for SPL competition. Quad 1.2 ohm 4" CCAW coils devour the power & dual NOMEX spiders keep it all together. New single woofer world record using XXX-18, 170.3dB!

- Cast Aluminum Frame
- 10ga Hard-wired Speaker Leads
- Coated Paper Cone
- UV Coated Foam Surround
- Aluminum Coil Former

Model	XXX-15	XXX-18
RMS Power (watts)	8,500	10,000
Efficiency (1w/1m dB)	90.8	91.40
Voice Coil	4" QVC 1.2Ω	4" QVC 1.2Ω
Mounting Depth	9.625"	11.125"



REFERENCE AMPLIFIERS

People ask all the time... "Are the new Reference amps as good as the old ones?" Think about it! It would be very foolish to bring back the finest amps ever made and make them worse. While they were astonishing at the time, times change... Parts get better and engineers get smarter. The new Reference amplifiers are nothing short of phenomenal! But talk is cheap, so here is a condensed description of why these amps are the finest in the car audio market today...

Power Supplies

Reference uses non-regulated power supplies on Class A/B full range models, with a massive amount of capacitance to smooth out switching ripple. Ripple can be defined as perturbations or agitations on the PSU rails caused by speaker current draw, which can get into the low current stages and cause distortion. Class G monoblock models have a fully regulated power supply with rail switching so as to optimize power into different impedances. The output is almost the same into 2 or 1 ohm loads, making it possible to run virtually any amount of subwoofers, regardless of the quantity of voice coils and their impedance!

The PCBs are heavily refined with new techniques that keep capacitor charging and discharging totally separate via multiple power and ground star points, which is rarely executed properly. This results in lower distortion, less noise, higher damping factor and better stereo separation. High and low current sections utilize completely different ground paths to eliminate ground currents from affecting low level signal purity. We use discrete regulators, not cheap resistor/zener diode types, for the pre-amps and crossovers. And finally, only the best high current bipolar transistors and MOSFETs will do.

Output Stage

Balanced inputs, in conjunction with balanced outputs from the preamp section eliminates internal ground loops, improving signal-to-noise ratio and stereo separation. The wholly complementary topology with proper constant currents is great for distortion and power supply denunciation. Differential feedback is derived directly from the speaker output terminals for lower distortion, higher separation and higher damping factor. And of course, our discrete Triple Darlington bi-polar junction transistor driver and output stages to avoid loading the low current stages.

PCB

We use 2 ounce PCB copper for high current and low trace impedance. To reduce ground impedance, there are plenty of large solid copper ground planes on the PCB. Lastly, there are numerous guard traces, between the signal traces to eliminate adjacent interferences.

Preamp/Crossovers

Now that you might understand a little bit about why these amps are the finest in the industry, we're sure you'll agree that the preamp/crossover section is as sophisticated as it could possibly be and leaveS nothing to be desired. While many amps have simple high and low pass filters, that simply is not enough for the serious audiophile and competitor. Any audiophile knows that crossovers are equally, or more important, than the speakers themselves.

BLT BALANCED LINE TRANSMITTER

The Hawkins circuit returns and is instrumental in properly tuning your sub bass with boost and subsonic controls. Hawkins can also be used with a high pass filter to add more punch to the midbass drivers. What is new is the expanded capabilities. We use no switches with fixed frequencies. All controls use top of the line potentiometers for precise control. High pass filters start way down at 15Hz and go all the way up to 4kHz, meaning that this is perfect as a subsonic for subs, high pass for midbass, high pass for midrange in 3-way components or even a high pass for tweeters that get their own channel of amplification for elite systems. Low pass filters range from 4kHz down to 50Hz. And for you tweakazoids, yes you can bandpass all day long.

If you are getting dizzy trying to comprehend the possibilities or simply do not understand the value of this, here is a scenario... An elite sound quality competitor wants to build a car. Ultimately, he/she would not use the passive crossovers and keep everything 100% active for perfect tunability. The system

REFERENCE	REF2.370	REF2.640	REF4.400	REF4.760	REF4.920	REF5.1000	REF1.500	REF1.1000
RMS Power @ 4Ω, 14.4V	110 x 2	190 x 2	70 x 4	115 x 4	145 x 4	95 x 4 & 270 x 1	-	-
RMS Power @ 2Ω, 14.4V	185 x 2	320 x 2	100 x 4	160 x 4	215 x 4	135 x 4 & 460 x 1	500	1,000
RMS Power @ 4Ω Bridged, 14.4V	370 x 1	640 x 1	200 x 2	380 x 2	460 x 2	270 x 2	-	-
RMS Power @ 1Ω, 14.4V	-	-	-	-	-	-	500	1,000
Remote Gain Control	-	-	-	-	-	Y	Y	Y
Dimensions: 2.25"h x 9.875"w	13.5"	16"	16"	20.5"	23"	23"	14"	18"



There are very few amplifiers ever made that can do all of this processing on board without extra products and the possibility of bringing in auxiliary noise.

Back to the original question we get asked so often... "Are the new Reference amps as good as the old ones?" DUH! If you do not think you can hear a difference, do yourself a favor... Go get schooled at a Soundstream Reference dealer. There is simply nothing better...

Listen & Feel...



TARANTULA

AMPLIFIERS

Tarantula amps have evolved drastically over the years. The TXs are improved with all SMD circuit boards for the first time. With higher power sizes than Picasso, the arantula series is streamlined, more powerful, and more advanced than all previous versions. Tarantula is the "go-to" series when you need big power, smart engineering, and all the features necessary to destroy the competition.



- Gloss Black Finish w/ Brushed Accents
- Double Sided SMD Circuit Boards
- TX2.1500 Class D Full Range
- Detent Crossovers & Gain Adjustments
- 12dB Variable High, Low, & Subsonic Crossovers
- 12dB Variable or Switched Bass Boost
- 2 & 4 ch. Models Band-Pass Crossovers
- High Level or 200mV-5V Low Level Input
- Direct 4 ga. Power & 8 ga. Speaker Terminals
- Dash Mount Remote Gain Control Included

NEW

TARANTULA	TX2.350	TX2.500	TX2.1500	TX4.440	TX4.560	TX1.1300D	TX1.2000D	TX1.2600D
RMS Power 4Ω	110 x 2	180 x 2	500 x 2	70 x 4	100 x 4	520	750	600
RMS Power 2Ω	175 x 2	250 x 2	750 x 2	110 x 4	140 x 4	900	1,300	1,200
RMS Power 4Ω Bridged	350 x 1	500 x 1	1,500 x 1	220 x 2	280 x 2	-	-	2,000 (1Ω)
RMS Power 1Ω	-	-	-	-	-	1,300	2,000	2,600 (.5Ω)
Remote Gain Control	Yes	Yes	Yes	Yes	Yes	Yes	Yes	Yes
Dimensions (9.625" w x 2.25" h)	16.25"	18.5"	16"	14.75"	18.5"	17.5"	19.5"	23.25"

RUBICON

AMPLIFIERS



Boasting a gorgeous, yet aggressive, blue hairline finish, there's no mistaking the fact that the Rubicon amplifiers stand for what Soundstream intended many years ago... Strong quality and strong identity - These bad boys are at the top of their game with the most modern technology available!



- Midnight Blue Finish w/ Brushed Accents
- Class A/B Full Range Monoblocks Available
- 12dB Variable High, Low, & Subsonic Crossovers
- 6dB & 12dB 50Hz Bass Boost
- 2 & 4 ch. Models Band-Pass Crossovers
- 180° Phase Control for 5 Ch. & Monoblocks
- Class Ds Strapable w/ 2Ω
- High Level or 200mV-6V Low Level Input
- Direct 4 ga. Power & 8 ga. Speaker Terminals
- Dash Mount Remote Gain Control Included

RUBICON	RUB1.400	RUB1.700	RUB1.1000D	RUB1.1600D	RUB1.2500D
RMS Power @ 4Ω, 14.4V	250 x 1	400 x 1	-	-	-
RMS Power @ 2Ω, 14.4V	400 x 1	700 x 1	800 x 1	1,100 x 1	1,700 x 1
RMS Power @ 1Ω, 14.4V	-	-	1,000 x 1	1,600 x 1	2,500 x 1
Remote Gain Control	Yes	Yes	Yes	Yes	Yes
Dimensions: (2."h x 8"w)	13.875"	19.75"	13.25"	15.75"	20.75"

RUBICON	RUB2.250	RUB2.450	RUB2.600	RUB4.500	RUB4.600	RUB5.800
RMS Power @ 4Ω, 14.4V	75 x 2	130 x 2	180 x 2	75 x 4	100 x 4	70 x 4 & 200 x 1
RMS Power @ 2Ω, 14.4V	125 x 2	225 x 2	300 x 2	124 x 4	150 x 4	115 x 4 & 340 x 1
RMS Power @ 4Ω Bridged, 14.4V	250 x 1	450 x 1	600 x 1	250 x 2	300 x 2	230 x 2
Remote Gain Control	-	Yes	Yes	-	-	-
Dimensions: (2."h x 8"w)	9.875"	17.75"	19.75"	13.875"	15.5"	19.75"

WWW.SOUNDSTREAM.COM

WWW.SOUNDSTREAM.COM

STEALTH AMPLIFIERS

Stealth amplifiers offer not only a small footprint, they're also stackable. While most compact amps in today's marketplace are Class D, Stealth amplifiers are all Class A/B for the purest uncolored sound reproduction.



STL6.620

The Best Things Can Come In Small Packages...

- Stackable Chassis for Multiple Amplifier Application
- Anodized Black Chassis w/ Chrome Accents
- Double Sided SMD Circuit Boards
- Detent Crossovers & Gain Adjustments
- 12dB Variable High, Low, & Subsonic Crossovers
- 12dB Variable or Switched Bass Boost
- 2 & 4 ch. Models Band-Pass Crossovers
- High Level or 200mV-5V Low Level Input
- Direct 4 ga. Power & 8 ga. Speaker Terminals
- Dash Mount Remote Gain Control Included

STEALTH	STL2.350	STL2.560	STL4.320	STL4.500	STL6.620	STL1.600D	STL1.1200D
RMS Power @ 4Ω, 14.4V	100 x 2	150 x 2	50 x 4	80 x 4	60 x 4, 100 x 2	400	-
RMS Power @ 2Ω, 14.4V	175 x 2	280 x 2	80 x 4	125 x 4	80 x 4, 150 x 2	600	700
RMS Power @ 4Ω Bridged, 14.4V	350 x 1	560 x 1	160 x 2	250 x 2	160 x 2, 300 x 1	-	-
RMS Power @ 1Ω, 14.4V	-	-	-	-	-	-	1,200
Remote Gain Control	-	-	-	-	-	Y	Y
Dimensions: (2.125" h x 6.5" w)	9.625"	11.25"	9.625"	11.25"	11.25"	9.625"	11.25"

PICASSO AMPLIFIERS



Picasso Amplifiers have all the features and looks you should expect from Soundstream. Full pre-amp functions, matching end caps to hide those ugly wires, and the power to suit any need. Even high level inputs to integrate the Picasso's into to a factory head unit.

- 12dB Variable High, Low, & Subsonic Crossovers
- 6dB & 12dB 50Hz Bass Boost
- 2 & 4 ch. Models Band-Pass Crossovers
- 180° Phase Control for 5 Ch. & Monoblocks
- High Level or 200mV-6V Low Level Input
- Direct 4 ga. Power & 8 ga. Speaker Terminals
- Dash Mount Remote Gain Control Included
- Wire Concealing End Caps

PICASSO	PX1.550D	PX1.1300D	PX1.2000D
RMS Power 4Ω, 14.4V	240	520	750
RMS Power 2Ω, 14.4V	400	900	1,300
RMS Power 1Ω, 14.4V	550	1,300	2,000
Remote Gain Control	Yes	Yes	Yes
Dimensions: (10" w x 2.125" h)	13.75"	18"	20"

PICASSO	PX2.200	PX2.420	PX2.580	PX4.320	PX4.580	PX4.760	PX5.580
RMS Power 4Ω, 14.4V	70 x 2	130 x 2	190 x 2	55 x 4	100 x 4	120 x 4	55 x 4 & 160 x 1
RMS Power 2Ω, 14.4V	100 x 2	210 x 2	290 x 1	80 x 4	145 x 4	190 x 4	80 x 4 & 260 x 1
RMS Power 4Ω Bridged, 14.4V	200 x 1	420 x 1	580 x 1	160 x 2	290 x 2	380 x 2	160 x 2
Remote Gain control	-	Yes	Yes	-	-	-	-
Dimensions: (10" w x 2.125" h)	9.5"	15.25"	19.25"	13.5"	15.75"	19.25"	19.25"

REFERENCE R1

SUBWOOFER

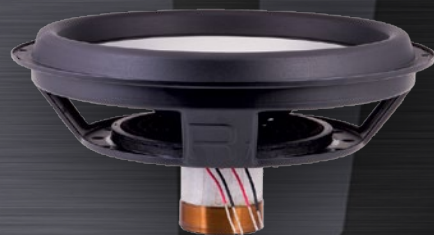
Soundstream's flagship sound quality subwoofer, the "R1" is probably the most revolutionary woofer you will ever see. These very unique subwoofers encompass technologies that no other American car audio companies are using. With features only found in high-end European subs and components, the R1s are extremely advanced.



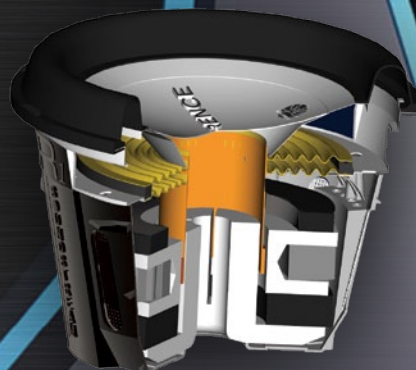
An unconventional under-hung motor structure significantly reduces distortion and yields the best quality sound. Dual Flux Plates act as a heat-sink to remove heat from the voice coil, and a second magnet increases magnetic strength.

- Aluminum Cone & Dust Cap
- Dual Spiders for Added Strength
- High Roll Surround for Extended Excursion
- Easy-to-Install Re-cone Kits Available

REFERENCE R1	R1-12	R1-15
RMS Power (watts)	800	900
Efficiency (1w/1m dB)	84.85	87.09
Voice Coil Configuration	3" Dual 4Ω	3" Dual 4Ω
Mounting Depth	7.5"	8.75"
Optimum Sealed ft ³	1.50	2.00
Optimum Ported ft ³	3.00	4.00



Easy-to-Install Re-cone Kit



REFERENCE

SUBWOOFERS

The brand new RXW Reference 12" sub is more than 2dB more efficient than the previous models, and even plays lower in sealed enclosures. The much improved and better looking RXW is very versatile and can work in all types of enclosures...



- Dual 4-Ohm 2.5" Voice Coil
- TPX Honeycomb Cone
- High-Roll Foam Surround
- Concealing Gasket/Trim Ring
- Spoked Stiffening Sub-Cone

REFERENCE	RXW-12
RMS Power (watts)	600
Efficiency (1w/1m dB)	89.90
Voice Coil Configuration	2" Dual 2
Mounting Depth	6.875"
Optimum Sealed ft ³	1.00
Optimum Ported ft ³	2.50



Most of today's car audio products consist of several custom tooled parts, all which cost extra money. The design goal for RF-8W was to engineer a phenomenal audiophile-grade subwoofer that did not cost a fortune. If you're looking for chrome or something really flashy, look somewhere else. If you're all about performance, look no further.

We used simple, classic materials for the best sound quality; non-pressed pulp paper cones, foam surrounds, and Conex suspension.

RF-8W is also a great fit in a factory 8" subwoofer location...



REFERENCE	RF-8W
RMS Power (watts)	180
Efficiency (1w/1m dB)	83dB
Voice Coil Configuration	2" Dual 4Ω
Mounting Depth	4"
Optimum Sealed ft ³	0.60
Optimum Ported ft ³	0.75

STEALTH-13

SUBWOOFER

Simply put, this woofer is the shallowest woofer on the market. It is a full 13.25" subwoofer that can play not only in a tiny .5 cubic foot enclosure, but without losing low bass extension. Perfect for applications in doors, under seats, foot wells, & trucks.

Low Bass In No Space!

- Proprietary Cast Aluminum Basket
- Inverted Motor Assembly
- Solid Aluminum Cone
- 2" Mounting Depth
- 5" Voice Coil
- Semi-Circular Frame Venting

SEMI-CIRCULAR BASKET VENTING



2"

STEALTH-13

RMS Power (watts)	200
Efficiency (1w/1m dB)	80.82
Voice Coil Configuration	5" Single 4Ω
Mounting Depth	2"
Optimum Sealed f ₃	0.75
Optimum Ported f ₃	N/A

SOUNDSTREAM
STEALTH-13BX



STEALTH-13BX

- .6 cubic foot Preloaded Enclosure
- Carpeted Black w/ Embroidered Accents
- 30 x 14.5 x 5.25/2.25

SPLX

SUBWOOFERS

To Burp or to Bass Race? That is the question... The answer is not easy. Competitors who use music like the powerful low rumble of low bass. The competitors that use test tones prefer higher notes for increased SPL scores. Last year we introduced the new SPLX-HX series that had increased power handling, lower Fs, and longer Xmax. This year, to compliment the HX is the brand new SPLX-HF. As HX stands for High eXcursion, HF stands for High Frequency. SPLX-HF has a higher Resonant frequency and higher efficiency.

Whether you Burp or Race, we got you covered....

- Cast Aluminum Frame
- Dual 2 ohm 3" CCAW Coils
- Epoxy Coated Spruce Pulp Cone
- Dual NOMEX Spiders
- Re-cone Kits Available



Easy-to-Install Re-cone Kit



SPLX	SPLX-122HX	SPLX-122HF	SPLX-152HX	SPLX-152HF
RMS Power (watts)	1,000	1,000	1,250	1,250
Efficiency (1w/1m dB)	86.18	87.25	89.5	90.05
Voice Coil Configuration	3" Dual 2Ω	3" Dual 2Ω	3" Dual 2Ω	3" Dual 2Ω
Mounting Depth	7"	7"	8.375"	8.375"
Optimum High Tuning (55hz)	3.00	3.00	4.00	4.00
Optimum Low Tuning (35Hz)	3.50	3.50	5.00	5.00



SPLX-HF High Frequency available Spring 2011

TARANTULA

SUBWOOFERS

The Tradition Continues...

The new T6 subwoofers are the next generation in the Tarantula series. As times change, so do people and music. Today calls for a lot of gut wrenching low bass. Both the 12" and 15" T6 has resonant frequencies 5Hz lower than the T5. And you thought the T5s played low! To accommodate the massive amount of air movement, the excursion capabilities have been increased 43% on both sizes! But it is not solely just a performance upgrade, it is also way cooler to look at. The transparent smoke cone can be backlit for custom installations. The unique spoked sub-cone is cool to look at too....



- Proprietary 7-Piece Cast Aluminum Basket
- Dual 4-Ohm 2.5" Voice Coil
- Translucent Cone w/ Etched Logos
- Spoked Stiffening Sub-Cone
- High-Roll Rubber Surround
- Twin Progressive Spider Suspension
- Concealing Trim Ring Included

TARANTULA T6	T6-12	T6-15
RMS Power (watts)	900	1,000
Efficiency (1w/1m dB)	84.90	86.70
Voice Coil Configuration	2.5" Dual 4 Ω	2.5" Dual 4 Ω
Mounting Depth	7"	8"
Optimum Sealed ft3	1.00	2.00
Optimum Ported ft3	2.50	3.00

Several shapes of subwoofers have been created in recent years; the fact is a square woofer maximizes cone area for 28% higher output than a round subwoofer. TSQ subs are not just another square subwoofer, rather a well engineered product capable of wearing the Soundstream logo...

TSQ

Dare To Be Square!

- Translucent TPX Honeycomb Cone
- Aluminum Coil Former
- Texture Coat on Stamped Steel Frame
- Multi-roll Rubber Surround

Add LEDs Or Neon Inside The Woofer Box To Light Up TSQs In Your Own Unique Color!



TARANTULA TSQ	TSQ-102	TSQ-104	TSQ-122	TSQ-124
RMS Power (watts)	500	500	650	650
Efficiency (1w/1m dB)	84.24	84.12	87.22	86.90
Voice Coil Configuration	2" Dual 2Ω	2" Dual 4Ω	2" Dual 2Ω	2" Dual 4Ω
Mounting Depth	7.125"	7.125"	7.375"	7.375"
Optimum Sealed ft3	1.25	1.25	2.00	2.00
Optimum Ported ft3	1.75	1.75	2.50	2.50

PICASSO

SUBWOOFERS



These aggressive new subs are engineered from the ground up. The new motors yield more power handling than the previous drivers and are specific per size. Past experience proves that one-size-fits-all motors for 10"-15" subs does not yield top performance. The drivers feature polypropylene cones and NBR rubber surrounds for durability. The PXW subwoofers are available in dual 4-ohm coils or dual 2-ohm coils for versatility.

- Dual 2 or Dual 4 Ohm KSV Kapton Voice Coils
- Polypropylene Injection Molded Cone
- NBR-Rubber Surround
- Nickel Plated 8 ga. Compression Wire Terminal
- Conex/Cotton Composite Spider
- Texture Coating on Steel Basket
- Suspension Integrated Tinsel Leads
- Vented Back Plate

PICASSO	PXW-10	PXW-10/2	PXW-12	PXW-12/2	PXW-15	PXW-15/2
RMS Power (watts)	350	350	400	400	500	500
Efficiency (1w/1m dB)	84.19	86.43	85.89	86.89	88.97	90.18
Voice Coil Configuration	2" Dual 4Ω	2" Dual 2Ω	2" Dual 4Ω	2" Dual 2Ω	2.5" Dual 4Ω	2.5" Dual 2Ω
Mounting Depth	5.75"	5.75"	6.5"	6.5"	8.125"	8.125"
Optimum Sealed ft3	1.00	1.00	1.25	1.25	1.75	1.75
Optimum Ported ft3	1.50	1.50	2.50	2.50	4.00	4.00

PICASSO THIN	PXW-10T	PXW-12T
RMS Power (watts)	160	180
Efficiency (1w/1m dB)	85.90	84.20
Voice Coil Configuration	1.5" Dual 2Ω	1.5" Dual 2Ω
Mounting Depth	2.375"	2.875"
Optimum Sealed ft3	0.60	0.90
Optimum Ported ft3	n/a	n/a

PW-10TBX Preloaded Enclosure

- Pre-loaded Enclosure w/ PW-10T Subwoofer
- 4 Ohm Impedance
- 160W Power Handling
- Carpeted Black w/ Embroidered Accents
- 25.5"l x 13.5" h x 4.5"/2.125"d

PW-12TBX Preloaded Enclosure

- Pre-loaded Enclosure w/ PW-12T Subwoofer
- 4 Ohm Impedance
- 180W Power Handling
- Carpeted Black w/ Embroidered Accents
- 29.75"l x 14.5" h x 5.75"/2.25"d



ARACHNID

SUBWOOFER

SW-12SE

- Black Zirconium Coated Injection Cone
- NBR-Rubber Surround
- Nickel Plated 8ga. Compression Wire Terminal
- Poly Cotton Spider
- Silver Texture Coat Finish on Stamped Steel Basket
- Suspension Integrated Tinsel Leads
- Vented Pole Piece

ARACHNID	SW-12SE
RMS Power (watts)	250
Efficiency (1w/1m dB)	84.61
Voice Coil Configuration	2" Dual 4 Ω
Mounting Depth	5.125"
Optimum Sealed ft3	1.00
Optimum Ported ft3	1.50

STW-12S

- Injection Molded Polypropylene Cone
- Butyl-Rubber Stitched Surround
- Vented Back Plate
- 60oz. Magnet
- Poly Cotton Spider
- 8ga Compression Wire Terminal
- Texture Coat on Stamped Steel Basket

STW	STW-12S
RMS Power (watts)	400
Efficiency (1w/1m dB)	87.00
Voice Coil Configuration	2.25" Dual 4 Ω
Mounting Depth	5.125"
Optimum Sealed ft3	1.00
Optimum Ported ft3	1.50

USB-8A

Preloaded Under Seat Enclosure w/ 8" Subwoofer & Amplifier



- 150w Amplifier Built-in
- 200mV-3V Input Sensitivity
- Variable 12dB 50-150Hz LP Crossover
- Variable 12dB 45Hz Bass Boost
- 180° Phase Switch
- >95dB Signal-to-Noise Ratio
- 0.05% Total Harmonic Distortion
- Remote Gain Control Included
- Dimensions: 3" h x 9.5" w x 14.5L



REFERENCE COMPONENTS

Wow! The story behind these components would take several pages. 3 years of studying European drivers is evident. All 3 drivers use the highest grade of powerful Neodymium magnets in the motors. The 1" tweeter uses a silk surround on the diaphragm to yield uncommonly smooth response for a metal dome tweeter. The 6.5" midbass uses a Kevlar-reinforced pulp paper cone, and with a laminated foam backing on the cone, the perfectly damped, uncolored sound is phenomenal.

The 2.5" midrange is really an unique piece. It uses an aluminum cone and dustcap to eliminate cone distortion caused by cone flex. It will fit in all dash-top location as well as A-pillars since it is only 1.375" deep. With the midrange and tweeters up higher, there is no need for bulky, expensive kickpanels. And the soundstage will be high, wide and deep.

The crossover, being the most critical part of the set, use 400Hz and 4kHz points to stay away from the sensitive 1kHz range. The tweeter has a PTC switch for protection and a 5-way L-Pad to set the level from +4dB to -4dB.

Easily rival components costing 3x the price, these components can satisfy even the most ruthless audiophile.

RF3.6C

Size & Type	6.5"
Power Handling (watts)	100
Efficiency	87dB
Top Mount Depth	2.625"

A big 3" voice coil in the woofer of RF-60C yields greater woofer control, while the treated paper cone gives a smooth, balanced sound. Keeping up with the lows is a 1" silk dome tweeter.

- 4 Ohm System Impedance
- 18db High-pass / 12dB Low-pass Crossover
- 4 Tweeter Attenuation Points
- Overload Bulb & PTC Tweeter Protection
- Selectable Low-pass Filter: 2.5/2.8kHz
- Cast Aluminum Woofer Basket

RF-60C

Size & Type	6.5"
Power Handling (watts)	180
Efficiency	90dB
Top Mount Depth	2.625"



RUBICON COMPONENTS

1.25" voice coil with Polypropylene cone & 1" silk dome tweeter make the Rubicon series components a great upgrade from boring factory speakers. Ferro fluid and former venting keep everything cool.

- 4 ohm System Impedance
- Die-Cast Basket w/ Diamond Cut Trim
- Swivel, Flush, or Surface Mount Tweeter
- Passive 12dB Crossover w/ Tweeter Protection
- -3 & -6dB Tweeter Attenuation

RBC.6

Size & Type	6.5"
Power Handling (watts)	150
Efficiency	90dB
Top Mount Depth	2.375"



ARACHNID COMPONENTS

- Zolon Coated Low Resonance Basket
- White Zirconium Coated Cone
- Rubber Surround
- 1" Aluminum Voice Coil
- 13mm Super Dome Tweeter
- White Terminal Connections
- Rubber Magnet Cover
- 20oz. Magnet
- Impedance: 4 Ohm
- Freq-Response: 70-20kHz
- Sensitivity: 92dB

SC-6T

Size & Type	6.5"
Power Handling (watts)	80
Efficiency	92dB
Top Mount Depth	2.5"



TARANTULA

FULL RANGE



SST8.2 (8.2" 2-Way)



SST6.9 (6x9" 2-Way)



SST5.7 (5x7" 2-Way)



SST6.5 (6.5" 2-Way)



SST5.2 (5.25" 2-Way)



SST4.6 (4x6" 2-Way)



SST4.0 (4" 2-Way)

New 8" for 2011!!!

Black Zirconium coated cones, Ferro fluid cooling, 1-inch silk dome tweeters and progressively slanted surrounds all combine to make the Tarantula line of coaxial speakers the best bet for those who want to use no more room than a standard coaxial, but insist on the sound quality of a component system.

- Optional Bi-Amp Operation
- Passive Crossovers Included
- 1" Swivel Tweeter
- 3 Ohm Impedance



2-Way Crossovers Included with all models

	SST8.2	SST6.9	SST6.5	SST5.7	SST5.2	SST4.6	SST4.0
Size & Type	8" 2-way	6x9" 2-way	6.5" 2-way	5x7" 2-way	5.25" 2-way	4x6" 2-way	4" 2-way
Power Handling (w)	170	150	120	130	100	100	85
Efficiency	90dB	90dB	90dB	90dB	89dB	89dB	88dB
Top Mount Depth	3.25"	3.375"	2.75"	2.5"	2.375"	2.125"	2"

PICASSO

FULL RANGE



PCT.693 6"x9" 3-way



PCT.653 6.5" 3-way



PCT.502 5.25" 2-way



PCT.573 5"x7" 3-way



PCT.462 4"x6" 2-way



PCT.402 4" 2-way

- 1" Aluminum Coil Former
- Stamped Steel Basket
- Carbon Injection Cone
- Mylar Midrange and Tweeter
- Butyl-Rubber Surround
- 3 ohm impedance
- 2" Mylar Midrange (693)
- 1" Mylar Tweeter
- .75" Mylar Super Tweeter (653 & 573)

	PCT.693	PCT.653	PCT.573	PCT.502	PCT.462	PCT.402
Size & Type	6"x9" 3-way	6.5" 3-way	5"x7" 3-way	5.25" 2-way	4"x6" 2-way	4" 2-way
Power Handling (watts)	130	90	110	80	75	65
Efficiency	92dB	90dB	90dB	90dB	89dB	89dB
Top Mount Depth	3.25"	2.25"	2"	1.875"	1.75"	1.625"

ARACHNID

FULL RANGE



SF-693T 6" x 9" 3-way



SF-652T 6.5" 2-way

	SF-693T	SF-652T
Size & Type	6"x9"	6.5"
Power Handling (watts)	100	60
Efficiency	92dB	92dB

- Zolon Coated Low Resonance Basket
- White Zirconium Coated Cone
- Rubber Surround
- 1" Aluminum Voice Coil
- 13mm Super Dome Tweeter
- White Terminal Connections
- Rubber Magnet Cover
- 5.4oz. Magnet
- Impedance: 4 Ohm
- Freq-Response: 70-20kHz
- Sensitivity: 92dB

PRO AUDIO



SST-22
Horn Tweeter



SST-20
Bullet Tweeter



SST-05
Bullet Tweeter
(pair)



SME.654
SME.658
6.5" Midrange



SM.654P
6.5" Midrange



SM.654N
SM.658N
6.5" Neodymium
Midrange

PRO AUDIO	SST-05	SST-20	SST-22	SME.654	SME.658	SM.654P	SM.654N	SM.658N
Size	Bullet Tweeter	Horn Tweeter	Horn Tweeter	6.5"	6.5"	6.5"	6.5"	6.5"
Max Power Handling	100	90	100	170	170	170	250	250
Impedance	4Ω	4Ω	4Ω	4Ω	8Ω	4Ω	4Ω	8Ω
Frequency Response	3kHz-20kHz	4kHz-20kHz	4kHz-20kHz	150-10kHz	150-10kHz	150-10kHz	180-10kHz	180-10kHz
Efficiency (1w/1m)	109dB	105dB	107dB	96dB	96dB	96dB	97dB	97dB
Mounting Depth	1.5"-2"	2.25"	2.125"	2.75"	2.75"	2.75"	2.75"	2.75"



SME.574 & SME.694
6" x 9" & 5" x 7" Midrange



SM8-100
8" Midrange



SME.804
SME.808
8" Midrange



SST-804N
8" Neodymium
Midrange

SM.804N
SM.808N
8" Neodymium
Midrange



SME.104
10" Midrange

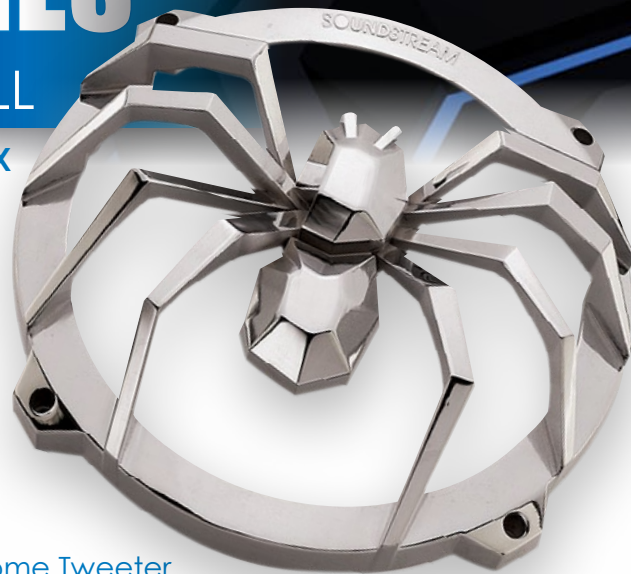


PRO AUDIO	SME.574	SME.694	SME.804	SME.808	SM8-100	SM.804N	SM.808N	SST-804N	SME.104
Size	5" x 7"	6" x 9"	8"	8"	8"	8"	8"	8"	10"
Max Power Handling	170	185	200	200	200	350	350	350	350
Impedance	4Ω	4Ω	4Ω	8Ω	8 ohm	4Ω	8Ω	4Ω	4Ω
Frequency Response	150-10kHz	120-8kHz	120-8kHz	120-8kHz	90-10kHz	135-8kHz	135-8kHz	100-10kHz	100-5kHz
Efficiency (1w/1m)	96dB	97dB	97dB	97dB	97dB	98dB	98dB	97dB	98dB
Mounting Depth	2.375"	3.25"	3.25"	3.25"	3.625"	3.25"	3.25"	2.75"	4.25"

WOOFER GRILL

GRILL-10X / GRILL-12X / GRILL-15X

Chrome Plated Cast Aluminum
Tarantula Woofer Grill



TWEETERS

TWT.2

1" Horn Loaded Titanium Dome Tweeter

- Flush mount aluminum housing
- Ferro fluid cooled
- Neodymium magnet
- 12dB/Octave passive crossover included
- Rated Input Power: 120W
- Impedance: 4 ohm
- Freq. Resp. 3KHz - 22KHz
- SPL 94dB

TWS.1

1" Soft Dome Tweeter

- Ferrofluid cooled
- Neodymium magnet
- Tri-Mounting - flush, surface or angle
- 12dB/Octave passive crossover included
- Rated Input Power: 110W
- Impedance: 4ohm
- Freq. Resp. 3KHz - 20KHz
- SPL 93dB

TWS.4

1" Tantalum Dome Tweeter

- Polished aluminum housing
- Dual-Mounting - surface or angle
- Built-in 12 dB In-Line Crossover
- Rated Input Power: 110W
- Impedance: 4 ohm
- Freq. Resp. 5KHz-25KHz
- SPL 95dB

TWS.3

1" PEI Dome Tweeter

- Tri-Mounting - flush, surface or angle
- Adjustable eyeball design
- Built-in 12 dB In-Line Crossover
- Rated Input Power: 110W
- Impedance: 4 ohm
- Freq. Resp. 2KHz-21KHz
- SPL 94dB

DEATHMAT

Deathmat is comprised of non-cured Butyl Rubber with an Aluminum top layer for efficient damping and a clean install. A difference will be noticed with as little as 50% of the panel covered with Deathmat. Obviously, the more you use, the more "dead" the panel gets. The "deader" the panel gets, the less road noise you will hear, the less vibration you'll hear from the body, and the cleaner and clearer your system will sound. You will also even notice an increase in SPL. Deathmat kills unwanted resonance!

Deathmat Bulk Pack Includes:
9 sheets of 18" x 32" Deathmat
(36 sq. ft)



MPQ-4US

1/2 DIN 4-Band Parametric EQ with SD/MMC/USB Input

- On-Board USB/SD/MMC Input & Control
- 2 Selectable Balanced RCA Inputs
- Optional High Level Input
- Variable Input Sensitivity
- Front, Rear, & Subwoofer RCA Outputs
- 4-Band 18dB Equalizer (50Hz, 210Hz, 1kHz, 20kHz)
- Master Volume Control
- Independent Subwoofer Level Control
- Variable Subwoofer Low-Pass Crossover
- Fade Control
- Blue Backlit Control Knobs
- Frequency Response: 10Hz-25kHz
- THD: .05%
- Stereo Separation: 85dB
- Signal-to-Noise Ratio: 110dB
- 7" w x 4.375" d x 1.125" h



MPQ-7XO

1/2 DIN Dual Channel Multi-Band Parametric EQ

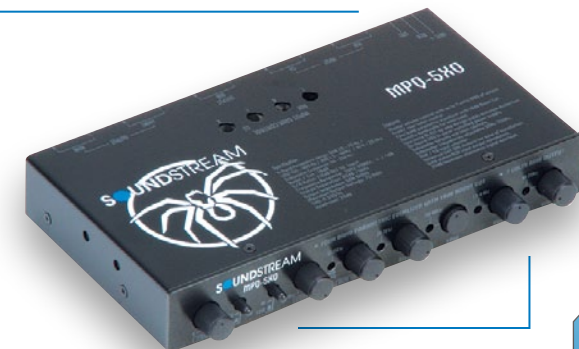
- 20dB Headroom Switching Power Supply
- Built-in Low Noise Bi-FET Op-Amps
- 2 Selectable Balanced RCA Inputs w/ Input Gain
- Front, Rear, & Subwoofer RCA Outputs
- Four 18dB Front Bands 125Hz; 500Hz; 3.5kHz; 12kHz
- Three 18dB Rear Bands 50Hz; 600Hz; 6.3kHz
- Variable 18dB Bass Boost; 20-70Hz
- Independent Subwoofer Level Control
- Selectable Subsonic Filter; 32Hz; 64Hz; 125Hz
- Fade Control
- Blue Backlit Control Knobs
- Frequency Response: 10-100kHz
- Output Signal Voltage Up To 8V
- THD: .05%
- Signal-to-Noise Ratio: 115dB
- 7" w x 4.25" d x 1.125" h



MPQ-5XO

Parametric EQ w/ Crossover & Sub Volume

- 20dB Headroom Switching Power Supply
- Built-in Low Noise Bi-FET Op-Amps
- 2 Selectable Balanced RCA Inputs w/ Variable Input Gain
- Front, Rear, & Subwoofer RCA Outputs
- 3 Variable Bandwidths; 18dB of Equalization
- 150-400Hz (Bass); 1.5-4kHz (Mid); 4-20kHz (High)
- Variable 18dB Bass Boost; 20-70Hz
- Independent Subwoofer Level Control
- Variable Subsonic Filter; 50-250Hz
- Fade Control
- Blue Backlit Control Knobs
- Frequency Response: 10-100kHz
- Output Signal Voltage Up To 10V
- THD: .005%
- Signal-to-Noise Ratio: 110dB
- 7" w x 3.625" d x 1.125" h



BX-4EQ

1/2 DIN 4-Band Parametric EQ & Bass Processor

- 2 Selectable Balanced RCA Inputs & Front Aux-in
- Front, Rear, & Subwoofer RCA Outputs
- 3-Band 18dB Equalizer, 150Hz (low) 1.2kHz (mid) 15kHz (hi)
- 27-63Hz Parametric Bass Boost w/ Q Control
- 35-80Hz PFM Subsonic Filter
- Independent Subwoofer Level Control
- Built-in 13V Peak Line Driver
- Fade Control
- Bass Maximizer Indicator
- Selectable Output Signal
- Voltage; 2.5V, 5V, 7.5V, 10V
- Ground Isolation Circuitry
- Blue Backlit Control Knobs
- Frequency Response: 10-100kHz
- THD: .003%
- Signal-to-Noise Ratio: 130dB
- 7" w x 4.375" d x 1.125" h



BASS PROCESSORS

BX-10

Digital Bass Reconstruction Processor

- Max. Bass Control
- Dash Mount Remote Control
- Bass Restoration Lighted Display
- Parametric Bass Control
- PFM Subsonic Filter
- Balanced Inputs
- Bass Output Control
- PWM High Head Room Power Supply
- Output Level: 13.5 volt
- Frequency Response: 10Hz 100KHz
- THD: 0.003%
- S/N Ratio: 130dB
- Balanced Input Noise Rejection: 60 dB



BX-10X

Digital Bass Reconstruction Processor

- Max. Bass Control
- Dash Mount Remote Control
- Bass Restoration Lighted Display
- Parametric Bass Control
- PFM Subsonic Filter
- Balanced Inputs
- Bass Output Control
- PWM High Head Room Power Supply
- Output Level: 13.5 volt
- Frequency Response: 10Hz 100KHz
- THD: 0.003%
- S/N Ratio: 130dB
- Balanced Input Noise Rejection: 60 dB



BX-12

Digital Bass Reconstruction processor

- Max. Bass Control
- Dash Mount Remote Control
- PFM Subsonic Filter & Bass Level Control
- Bass Restoration Lighted Display
- Parametric Bass Control
- PFM Subsonic Filter
- Balanced Inputs
- Bass Output Control
- PWM High Head Room Power Supply
- Output Level: 13.5 volt
- Frequency Response: 10Hz 100KHz
- THD: 0.002%
- S/N Ratio: 132dB
- Balanced Input Noise Rejection: 60 dB



BX-15

Digital Bass Reconstruction processor

- Max. Bass Control
- Dash Mount Remote Control
- PFM Subsonic Filter & Bass Level Control
- Illuminated logo and knobs
- Brushed Aluminum Case & Handles
- Chrome Logo Plate
- Bass Restoration Lighted Display
- Parametric Bass Control
- PFM Subsonic Filter
- Balanced Inputs
- Bass Output Control
- PWM High Head Room Power Supply
- Output Level: 13.5 volt
- Frequency Response: 10Hz 100KHz
- THD: 0.002%
- S/N Ratio: 132dB
- Balanced Input Noise Rejection: 60 dB



BASS PROCESSORS

BX-20Z

Digital Bass Reconstruction processor

- Max. Bass Control
- Dash Mount Remote Control
- PFM Subsonic Filter & Bass Level Control
- Illuminated logo and knobs
- Brushed Aluminum Case
- Chrome Logo Plate
- Bass Restoration Lighted Display
- Parametric Bass Control
- PFM Subsonic Filter
- Balanced Inputs
- Bass Output Control
- PWM High Head Room Power Supply
- Output Level: 13.5 volt
- Frequency Response: 10Hz 100KHz
- THD: 0.002%
- S/N Ratio: 132dB
- Balanced Input Noise Rejection: 60 dB



XBP-10

SPL Competition Signal Processor

- 2 Signal Paths – Sound Quality & SPL
- Individual Level Control for each Signal Path
- 5V or 10V Signal Voltage Switch
- 50Hz Tone Generator for Tuning
- Variable 25-85Hz Bass EQ
- Dash Remote with Boost Level, Subsonic Filter, and SQ-to-SPL Signal Path Switch
- 4 Pairs of Outputs – 1 Main and 3 w/ Variable Delay for Time Alignment of Subwoofers
- Through Pass Outputs
- Turn On/Off Delay to Eliminate Pops
- Plexi Glass Setting Cover Included



INT-2BX

OEM Integration w/ Bass Processor

Many vehicles have sophisticated radios with steering wheel controls, navigation, or Bluetooth functions. INT-2BX allows integration of mild to wild aftermarket systems without sacrificing your factory radio.

Connect your factory radio to the INT-2BX via high-level front, rear and available sub input. Each channel has independent input level adjustment, up to 30v. A variable frequency and Q parametric equalizer, subsonic filter, and bass boost are available for subwoofer signal processing. We've even included a dash mount remote sub gain module to control the subwoofer output from the drivers seat with ease.

No more excuses about why you can't have a bad ass Soundstream system in your ride...

Features & Details

- 5 Channel Hi-Level Input
- 4v-30v Input Sensitivity
- Variable 30-80Hz Bass EQ
- Variable 0-12dB Bass Boost
- Variable Boost Q
- Subwoofer Input Selector
- 15-50Hz Subsonic Filter
- Remote Subwoofer Gain Control



- Front, Rear and Sub RCA Outputs
- Delayed Remote Turn-on Output
- On-Board Clip Indicator
- Signal Sense Auto Turn-On

POWER MANAGEMENT

Often called a "power cap" or "stiffening cap", some people prefer caps over secondary batteries. A second battery is great for high power systems, but should be accompanied by an upgraded alternator that can efficiently charge both batteries. This gets expensive. A cap stores power too, but can charge and discharge in a fraction of a second, depending on size. While great for transient peaks in music, it does not have the stamina that a battery has and is not an equivalent substitute.

CapCell is a fusion of both products. The CapCell offers auxiliary power with the ability to enhance transient notes, often suppressed by the OEM battery, while reinforcing the battery during long, intense bass notes. A second alternator is not necessary in this situation, making the CapCell a perfect addition and an affordable way to supply the necessary power for a system.



	SC-400	SC-600	SC-1000
Application	500-1000 watts	1000-2000 watts	2000-3000 watts
Amperage/3 seconds	400	600	1000
Terminals	1/4" Bolt	1/4" Bolt or Post	1/4" Bolt or Post
Amp/Hour	6	7	21
Resistance (m-ohm)	4.5	3	1.6

SCX-1.5F 1.5 Farad Power Capacitor

- 12-16 DC Input Voltage
- Red LED Voltage Meter
- Bolt Post for Ring Terminal



SCX-2 2 Farad Power Capacitor

SCX-4 4 Farad Power Capacitor

- 12-16 DC Input Voltage
- Blue LED Voltage Display
- Chrome Plated Chassis
- Bolt Post for Ring Terminal



SC-8F 8 Farad Power Capacitor

SC-15F 15 Farad Hybrid Power Capacitor

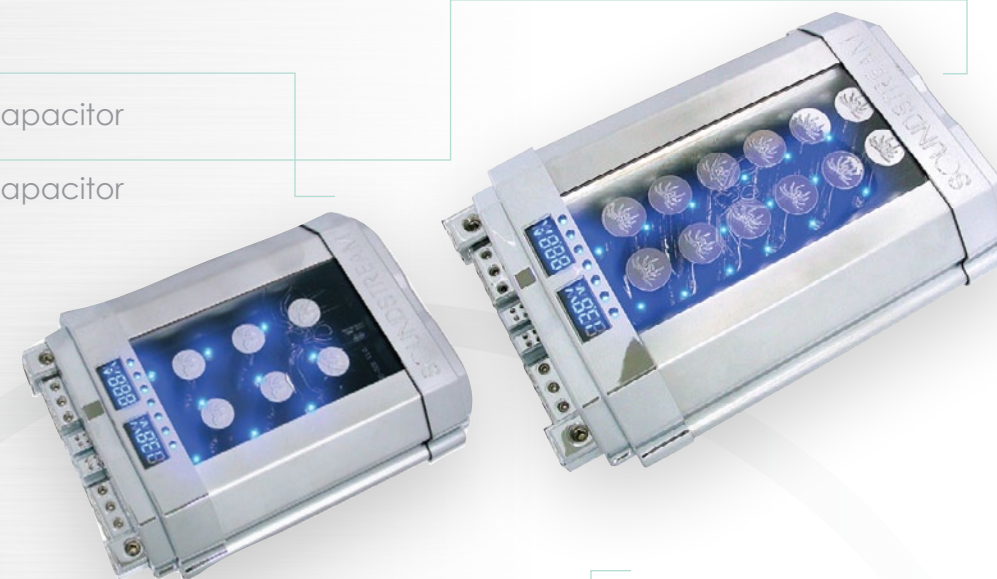
- 12-16 DC Input Voltage
- Blue LED Voltage Display
- 0ga Power Input w/ 4ga Reducer



SC-20CA 20 Farad Hybrid Super Capacitor

SC-40CA 40 Farad Hybrid Super Capacitor

- 12-16 DC Input Voltage
- Extruded Aluminum Housing
- Volt & Amperage Meter
- PCB with Blue LED Display
- Charging Status Indicator
- 24 Status LEDs
- Delayed Amp Turn-on
- 0ga Input and 4 ga output



WK-2G 2AWG Wire Kit

- 17ft 2AWG Translucent Matte Black Power Wire
- 3ft 2AWG Translucent Matte Clear Ground Wire
- 30ft 12ga Translucent Matte Black & Matte Clear Twisted Pair Speaker Wire
- 17ft 18ga Translucent Matte Black & Matte Clear Twisted Pair RCA Interconnects
- 17ft Translucent Matte Black Remote Turn-On Wire
- 100A MANL Fuse & Holder
- Complete Installation Accessories

WK-4G 4AWG Wire Kit

- 17ft 4AWG Translucent Matte Black Power Wire
- 3ft 4AWG Translucent Matte Clear Ground Wire
- 25ft 12ga Translucent Matte Black & Matte Clear Twisted Pair Speaker Wire
- 17ft Translucent Matte Black & Matte Clear Twisted Pair RCA Interconnects
- 17ft Translucent Matte Black Remote Turn-On Wire
- 80A MANL Fuse & Holder
- Complete Installation Accessories



WK-8G 8AWG Wire Kit

- 17ft 8AWG Translucent Matte Black Power Wire
- 3ft 8AWG Translucent Matte Clear Ground Wire
- 25ft 16ga Translucent Matte Black & Matte Clear Twisted Pair Speaker Wire
- 17ft 18ga Translucent Matte Black & Matte Clear Twisted Pair RCA Interconnects
- 17ft Translucent Matte Black Remote Turn-On Wire
- 60A AGU Fuse & Holder
- Complete Installation Accessories



WK-44G 4AWG 4-Channel Wire Kit

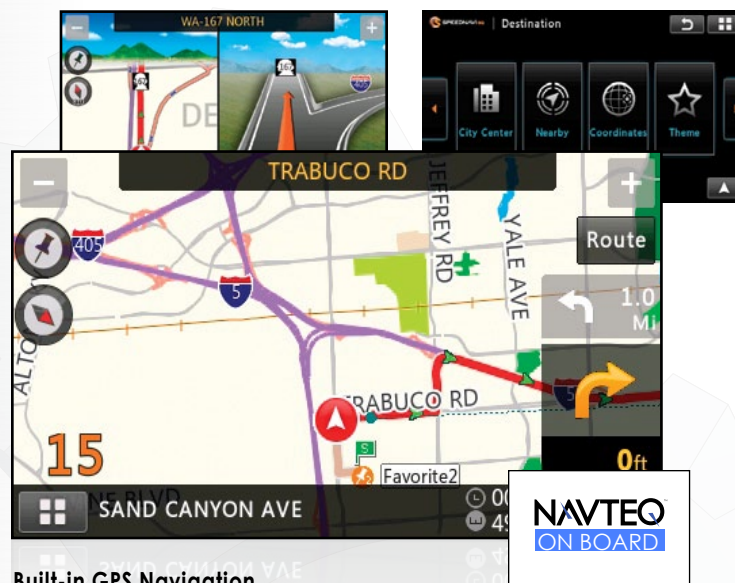
- 17ft 4AWG Translucent Matte Black Power Wire
- 3ft 4AWG Translucent Matte Clear Ground Wire
- 40ft 12ga Translucent Matte Black & Matte Clear Twisted Pair Speaker Wire
- 2 pcs. 17ft Translucent Matte Black & Matte Clear Twisted Pair RCA Interconnects
- 17ft Translucent Matte Black Remote Turn-On Wire
- 80A MANL Maxi Fuse & Holder
- Complete Installation Accessories

Soundstream **INGENIX** powered source units use a proprietary engine featuring 800 MHz CPU processor & WIN CE 6.0 operating system. Commonly found in compact netbooks, such lightning fast function processing has not been possible in an after-market automotive multimedia system, until now. **INGENIX** programming brings unique feature applications to your fingertips.



Go ahead, take a second look....

The primary menu of the **INGENIX** source units has an appeal that you might expect only from a computer. The LED back light Full HD quality 800x480 screen resolution yields a crisp image. Drag any mode application icon from the slide menu at the bottom of the screen and drop it onto the desktop as a shortcut. Utilize the drop down widget menu for quick settings access. The main menu background and brightness settings can be set to change automatically at night. There's even a scrolling marquee banner displaying your short message.



Built-in GPS Navigation

All **INGENIX** powered source units are available standard with GPS turn-by-turn navigation for USA & Canada (other countries available). Set your destination to one of 12 million Points of Interest. Additional features include favorites list, programmable home & office destinations, & multi-lingual, multi-accented voices. Mapping and POI data from Navteq.



Digital Signal Processing

DSP features include a digital 7-band equalizer w/ 9 factory presets & 2 custom presets, real time analyzer, individual source level adjustment, variable subwoofer level control w/ low pass crossover, and sound staging controls.



16GB SDHC & USB 2.0 Reader

Playback MP3, WAV, FLAC, & AC3 audio files, or MP4, WMV, DivX, & XviD video files from up to a 16GB SDHC card or USB 2.0 mass storage device. Artwork transfers from enabled device, if available. **INGENIX** units will read files from a USB powered portable hard drive, up to 250GB capacity.



Full iPod Control Integration

Scroll through your iPhone, iPod Touch, Classic, or Nano to find your favorite tracks. Search options include by Album, Artist, Genre, Playlist, or entire track list. Jump through lists by first alpha character scrolling. Connect using your existing iPod USB cable.



Bluetooth 3.0 Connectivity

Pair your Bluetooth enabled cell phone, Smartphone, or iPhone with **INGENIX** for safe, hands free calling. If capable, your phones contacts list will transfer on-screen, as well as recent call logs. Contact lists names appear as caller ID when receiving a call.



Streaming Bluetooth Music (A2DP)

Pair your Bluetooth enabled cell phone, Smartphone, iPhone, or iPod Touch for wireless MP3 playback. Use the touch screen controls for basic operations.



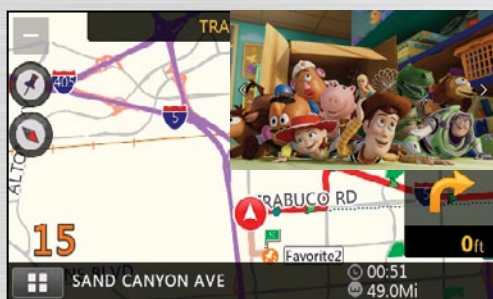
Multimedia File Manager

Sort, view, play, move, or delete your multimedia & data files. No longer will you need a computer on the go to manage your USB/SD/HDD Mass Storage devices.



Speedometer & Compass

Are larger wheels and tires throwing off your speedometer? Can't figure which direction you're driving? Utilize the GPS based real-time speedometer and directional compass to help out. Even set them as the screen saver for constant viewing.



Picture-in-Picture

INGENIX is the first to bring the Picture-in-Picture function into the car. PIP allows uninterrupted video playback while simultaneously viewing the GPS navigation map in real time, as it happens. The picture can be re-sized and positioned to 3 different ratios.

ADDITIONAL FEATURES

- Dual Zone for Rear Seat or Overhead Entertainment
- Adjustable Video Output Screen Ratio & Image Positioning
- Utility Application w/ Memo Pad, Calculator, Calendar, Car Maintenance, Texas Hold 'em Poker, & World Clock
- 4V Front, Rear & Subwoofer Pre-amp Output
- Front Panel 3.5mm AUX A/V Input
- A/V Input from Auxiliary Source
- Rear View Camera RCA Input w/ Trigger

- Rear View Camera RCA Input w/ Trigger
- JPG, BMP, & GIF Photo Browser
- Upload Custom Screen Savers
- Remote Control Sold Separately
- Digital & Analog TV Tuners Available
- NTSC/PAL Video Playback
- 50W x 4 MOSFET Speaker Outputs
- 400NIT Panel Brightness

SNX-771

Double Din INGENIX AVN Source Unit w/ Detachable Digital 7" TFT-LCD Touch Screen



- Motorized Faceplate w/ Preset Angle Adjustment
- Detachable Theft Deterrent Faceplate
- Front Panel USB 2.0 & SDHC Readers
- Front Panel 3.5mm AUX A/V Input
- Embossed Aluminum Soft Touch Sensor Buttons
- Copper Electroplated Chassis
- Gloss Black Finish

SNX-751

Single Din INGENIX AVN Source Unit w/ Flip-up Digital 7" TFT-LCD Touch Screen



- Motorized Forward/Backward Telescoping & Angle Adjustment
- Detachable Theft Deterrent Front Panel
- Digital Clock or Radio Frequency Readout
- Front Panel USB 2.0 & SDHC Readers
- Front Panel 3.5mm AUX A/V Input
- Embossed Aluminum Soft Touch Sensor Buttons
- Copper Electroplated Chassis
- Gloss Black Finish



SNX-731

Single Din INGENIX AVN Source Unit w/ Detachable Digital 7" TFT-LCD Touch Screen



- Motorized Faceplate w/ Preset Angle Adjustment
- Detachable Theft Deterrent Faceplate
- Embossed Aluminum Soft Touch Sensor Buttons
- Front Panel USB 2.0 & SDHC Readers
- Front Panel 3.5mm AUX A/V Input
- Copper Electroplated Chassis
- Gloss Black Finish



S-81ACRD

Double Din INGENIX AVN Source Unit w/ Digital 7" TFT-LCD Touch Screen



Fits 2008~2011 Honda Accord EX & LX Models

OEM Upgrade System Includes:

- Dash Trim Kit
- 8" TFT-LCD Touch Screen
- Embedded Turn-by-Turn GPS Navigation
- Bluetooth 3.0
- Bluetooth Streaming MP3 (A2DP)
- Full iPod Integration w/ Touch Screen Control
- Rear View Camera Input w/ Trigger
- 16GB USB 2.0 & SDHC Reader Module
- Touch Screen Control of VDVD-200/VDVD-155 DVD Player (not included)
- Retains all OEM Trip Information, Disc Playback, & RDS
- Retains Climate Control Functions (EX only)



REM-5

Remote Control for Soundstream INGENIX Source Units



TV-ATSC-MH (Digital MH)

TV-DVB-T

TV-DVB-H

TV-ISDB-T

TV-T-DMB

TV-CMMB

TV-AN (Analog Multi-Systems)

Analog or Digital TV Tuners for Soundstream INGENIX Source Units



WHO SAYS SIZE DOESN'T MATTER?



You would have to be a eunuch to not realize that size does matter in this macho world! The 8300 series in-dash multimedia source units are the first of their kind. Offering an 8.3" rotating flip-up screen! We developed a new ultra slim 1/2" DVD drive and metal gearing mechanisms that no one else in the world can deliver. It comes with two cages, one that allows hooded dash installs, and the second for traditional 1-DIN installation. The new digital screen gives the very best picture with super hi-resolution of 800 x 480. Its like watching HDTV at home. We have models with or without Bluetooth 2.0 & A2DP for streaming MP3's from your Smartphone or iPod. Both versions are ready for our add-on GPS navigation module, NAVIBOX-1. The 8300 series is your best solution for digital media integration; no one else offers this size or platform.

Next time ask her if she wants to see the biggest one in town. She just might show you her poledance!



Nearly 40% More Viewing Area Than 7" Worlds First 8.3" Flip-Up Source Unit

- VIR-8300NR
 - VIR-8310NRB (w/ Bluetooth 2.0)
 - VIR-8300NRT (w/ Analog TV Tuner)
 - VIR-8310NRBT (w/ Bluetooth 2.0 & Analog TV Tuner)
- Single Din A/V Source Unit w/ Digital 8.3" Flip-Up TFT-LCD Touch Screen



Additional Features

- Motorized Telescoping & Angle Adjustment
- Theft Deterrent Front Cover Included
- Extended Sleeve & Trim Ring Included
- Playback from 16GB SD, 32GB USB Drive
- Rear View Camera Input w/ Trigger
- Upload Custom Backgrounds & Screen Savers
- Choose from 3 Graphic User Interface
- Digital Audio Amplifier Included
- 50w x 4 MOSFET Speaker Outputs
- USA/European Frequency Stepping
- NTSC/PAL Video Playback
- 800 x 480 Widescreen Resolution
- 400 NIT LED Brightness

Bluetooth Features

- Noise & Echo Cancellation
- Contacts/Address Book Transfer
- Caller ID from Contacts/Address Book
- Recent Calls & Talk Time Logs
- A2DP for Wireless MP3 Playback



MULTIMEDIA SOURCE UNITS

- VIR-7355NR
- VIR-7355NRBT (w/ Bluetooth 2.0)

Exact Double Din A/V Source Unit w/ Digital 7" TFT-LCD Touch Screen



- VIR-7870NRB (w/ Bluetooth)
 - VIR-7870NRT (w/ Analog TV Tuner)
 - VIR-7870NRBT (w/ Bluetooth and Analog TV Tuner)
- Single Din A/V Source Unit w/ Digital 7" Flip-Up TFT-LCD Touch Screen



Additional Features

- Motorized Telescoping & Angle Adjustment
- Detachable Theft Deterrent Front Panel
- Playback from 16GB SD, 32GB USB Drive
- Rear View Camera Input w/ Trigger
- Upload Custom Backgrounds & Screen Savers
- Choose from 3 Graphic User Interface
- 50w x 4 MOSFET Speaker Outputs
- USA/European Frequency Stepping
- NTSC/PAL Video Playback
- 800 x 480 Widescreen Resolution
- 400 NIT LED Brightness

Bluetooth Features

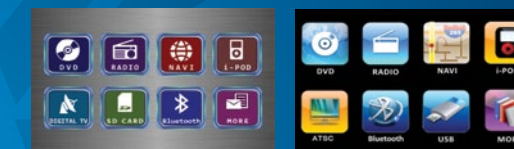
- Noise & Echo Cancellation
- Contacts/Address Book Transfer
- Caller ID from Contacts/Address Book
- Recent Calls & Talk Time Logs
- A2DP for Wireless MP3 Playback

Additional Features

- Motorized Faceplate w/ Angle Adjustment
- Theft Deterrent Front Cover Included
- Playback from 16GB SD, 32GB USB Drive
- Rear View Camera Input w/ Trigger
- Upload Custom Backgrounds & Screen Savers
- Choose from 3 Graphic User Interface
- 50w x 4 MOSFET Speaker Outputs
- USA/European Frequency Stepping
- NTSC/PAL Video Playback
- 800 x 480 Widescreen Resolution
- 400 NIT LED Brightness

Bluetooth Features

- Noise & Echo Cancellation
- Contacts/Address Book Transfer
- Caller ID from Contacts/Address Book
- Recent Calls & Talk Time Logs
- A2DP for Wireless MP3 Playback



Additional GUI Settings



Additional GUI Settings

VIR-7840NR
VIR-7840NRBT (w/ Bluetooth)
VIR-7840NRT (w/ Analog TV Tuner)

Single Din A/V Source Unit w/ Digital 7" Flip-Up TFT-LCD Touch Screen



Additional Features

- Motorized Telescoping & Angle Adjustment
- Detachable Theft Deterrent Front Panel
- Playback from 16GB SD, 32GB USB Drive
- Rear View Camera Input w/ Trigger
- Upload Custom Backgrounds & Screen Savers
- Choose from 3 Graphic User Interface
- 50w x 4 MOSFET Speaker Outputs
- USA/European Frequency Stepping
- NTSC/PAL Video Playback
- 800 x 480 Widescreen Resolution
- 400 NIT LED Brightness



Bluetooth Features

- Noise & Echo Cancellation
- Contacts/Address Book Transfer
- Caller ID from Contacts/Address Book
- Recent Calls & Talk Time Logs
- A2DP for Wireless MP3 Playback



Additional GUI Settings



VIR-7830
VIR-7830B (w/ Bluetooth 2.0)
VIR-7830T (w/ Analog TV Tuner)
VIR-7830BT (w/ Bluetooth 2.0 & Analog TV Tuner)

Single Din A/V Source Unit w/ 7" Flip-Up TFT-LCD Touch Screen



Additional Features

- Motorized Angle Adjustment
- Detachable Theft Deterrent Front Panel
- Playback from 16GB SD, 16GB USB Drive
- MP3 ID3 Tag Reading
- Rear View Camera Input w/ Trigger
- 50w x 4 MOSFET Speaker Outputs
- USA/European Frequency Stepping
- NTSC/PAL Video Playback
- 480 x 234 Widescreen Resolution
- 400 NIT LED Brightness

Bluetooth Features

- Noise & Echo Cancellation
- Contacts/Address Book Transfer
- Caller ID from Contacts/Address Book
- Recent Calls & Talk Time Logs
- A2DP for Wireless MP3 Playback

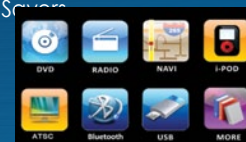


VIR-7022NR
VIR-7022NRB (w/ Bluetooth)
VIR-7022NRT (w/ Analog TV Tuner)

Single Din A/V Source Unit w/ Detachable Digital 7" TFT-LCD Touch Screen

Additional Features

- Motorized Angle Adjustment
- Detachable Theft Deterrent Faceplate
- Padded Carry Case Included
- Playback from 16GB SD, 32GB USB Drive
- Rear View Camera Input w/ Trigger
- Upload Custom Backgrounds & Screen Savers
- Choose from 3 Graphic User Interface
- 50w x 4 MOSFET Speaker Outputs
- USA/European Frequency Stepping
- NTSC/PAL Video Playback
- 800 x 480 Widescreen Resolution
- 400 NIT LED Brightness



Bluetooth Features

- Noise & Echo Cancellation
- Contacts/Address Book Transfer
- Caller ID from Contacts/Address Book
- Recent Calls & Talk Time Logs
- A2DP for Wireless MP3 Playback



SINGLE DIN CHASSIS W/ DETACHABLE FACEPLATE



VIR-7000NR
VIR-7000NRT (w/ Analog TV Tuner)

Single-DIN A/V Multimedia Source w/ Detachable Digital 7" TFT-LCD Touch Screen

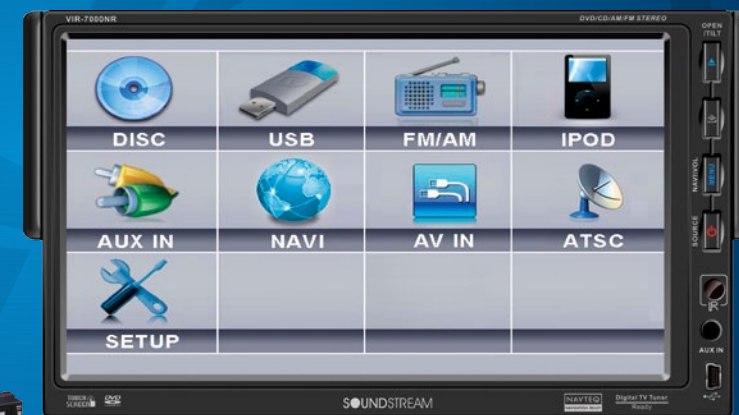


Additional Features

- Motorized Angle Adjustment
- Detachable Theft Deterrent Faceplate
- Padded Carry Case Included
- Playback from 16GB SD, 32GB USB Drive
- Rear View Camera Input w/ Trigger
- 50w x 4 MOSFET Speaker Outputs
- USA/European Frequency Stepping
- NTSC/PAL Video Playback
- 800 x 480 Widescreen Resolution
- 400 NIT LED Brightness



SINGLE DIN CHASSIS W/ DETACHABLE FACEPLATE



VIR-5100
VIR-5100T (w/ Analog TV Tuner)
VIR-5100TB (w/ Analog TV Tuner and Bluetooth 2.0)

Single-DIN A/V Multimedia Source w/ Detachable Digital 5" TFT-LCD Touch Screen



Additional Features

- Motorized Angle Adjustment
- Detachable Theft Deterrent Faceplate
- Padded Carry Case Included
- Playback from 16GB SD, 32GB USB Drive
- Rear View Camera Input w/ Trigger

- 50w x 4 MOSFET Speaker Outputs
- USA/European Frequency Stepping
- NTSC/PAL Video Playback
- 480 x 272 Widescreen Resolution
- 350 NIT LED Brightness



SINGLE DIN CHASSIS W/ DETACHABLE FACEPLATE

VIR-3600

VIR-3600T (w/ Analog TV Tuner)

Single DIN A/V Source Unit w/ Detachable Digital 3.6" TFT-LCD Screen



Additional Features

- Theft Deterrent Detachable Flip-down Faceplate
- Playback from DVDR/RW & CDR/RW Including VCD, MP3, MP4, & DivX
- Playback from 16GB SD, 16GB USB Drive
- 18 FM / 12 AM Station Memory
- Feather Touch Sensor Controls
- MP3 ID3 Tag Reading
- 40w x 4 MOSFET Power
- Audio Staging Controls
- Custom & Pre-Set EQ Settings
- USA/European Frequency Stepping
- NTSC/PAL Video Playback
- 480 x 234 Resolution & 250NIT NIT Brightness



VIR-3200

VIR-3200T (w/ Analog TV Tuner)

Single DIN A/V Source Unit w/ Detachable 3.2" TFT-LCD Screen



Additional Features

- Theft Deterrent Detachable Flip-down Faceplate
- Playback from DVDR/RW & CDR/RW Including VCD, MP3, MP4, & DivX
- Playback from 16GB SD, 16GB USB Drive
- 18 FM / 12 AM Station Memory
- Feather Touch Sensor Controls
- MP3 ID3 Tag Reading
- 40w x 4 MOSFET Power
- Audio Staging Controls
- Custom & Pre-Set EQ Settings
- USA/European Frequency Stepping
- NTSC/PAL Video Playback
- 320 x 240 Resolution & 250NIT NIT Brightness



VIR-3265S

VIR-3265TS (w/ Analog TV Tuner)

Combo Pack with 1 VIR-3200 & 1 Pair of SF-652T 6.5" Speakers



NAVIBOX-1

Plug-N-Play Turn-By-Turn GPS Navigation Module



- Works with all NR, NRB, NRT, or NRBT Source Units
- Commanded by Source Unit Touch Screen Controls
- Navteq USA & Canada Mapping w/ 12 Million POI Database
- Windows CE 5.0 Operating System
- 386MHz Atlas Processor for Immediate Calculation
- Navigate to Destinations by Address, POI Search, or Favorites List
- Programmable Home and Office Destinations
- Choice of Quickest or Shortest Route
- Remaining Time & Distance to Location Calculation
- Metric or USA Units of Measure
- Text-To-Speech for Most Major Highways
- Multi-Language & Male, Female, Southern & Urban Accents
- 2D & 3D Visual Configurations
- Automatic Day & Night Illumination
- Dimensions: 4.1" x 4.2" x 1"

VDTV-MHU

Universal or Direct Control DTV-MH TV Tuner



- Touch Screen Control from NR, NRB, NRT, or NRBT Source Units
- Universal A/V RCA Outputs For Any Device
- Remote Control & IR Repeater Included
- Neodymium Magnetic Antenna Included
- Full DTV-MH 57-803MHz Receiving Frequencies
- Freeway Speed Signal Receiver
- Electronic Programming Guide for On-Screen Channel Surfing
- Favorite Channels Programming
- CCD Closed Captions Optional
- OSD Language Options: English, Spanish, & French
- 4:3 or 16:9 Aspect Ratio
- SDTV 720P Video Signal

DTV-1

Direct Control ATSC Digital TV Tuner



- Full DTV-MH 57-803MHz Receiving Frequencies
- Electronic Programming Guide for On-Screen Channel Surfing
- Favorite Channels Programming
- CCD Closed Captions Optional
- OSD Language Options: English, Spanish, & French
- 4:3 or 16:9 Aspect Ratio
- SDTV 720P Video Signal
- Antenna Included

IC-1

Limited Control iPod Integration Cable

- Playback & Charging of iPod Classic, Nano, & iTouch
- Compatible with IC-1 Ready Source Units Only



IC-2

Full Function iPod integration Cable

- Full Control & Charging of iPod Classic, Nano, & iTouch
- Scroll by Artists, Albums, Genres, or Playlists
- Video Playback from Classic & iTouch
- Compatible with IC-2 Ready Source Units Only



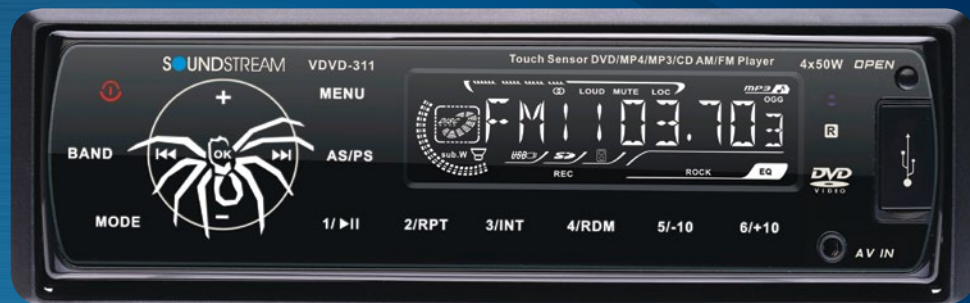
DVD PLAYERS

VDVD-311

VDVD-311T (w/ Analog TV Tuner)

1 DIN DVD Player w/ AM/FM & SD/USB Readers

- Drop-down Faceplate for Concealed Disc Loading
- Playback from DVDR/RW & CDR/RW Including VCD, MP3, MP4 & DivX
- Flash Memory for Last Position Recall
- Playback from 16GB SD, 16GB USB Drive
- MP3 ID3 Tag Readout On Screen
- Front Panel 3.5mm Auxiliary Audio Input
- Feather Touch Sensor Controls
- 18 FM / 12 AM Station Memory
- 40w x 4 MOSFET Power
- A/V Pre-amp Outputs, 2V
- NTSC/PAL Auto Selection



VDVD-155

VDVD-156T (w/ Analog TV Tuner)

1 DIN In-Dash DVD Player w/ SD & USB Readers

- Playback from 4GB SD, 4GB USB Drive
- Slot Loading DVD Drive
- In-Dash, Floor, & Console Mounting Brackets Included
- DIN Size Trim Ring For In-Dash Mounting Included
- Flash Memory for Last Position Recall
- Remote Control & IR Repeater Included
- OSD On Screen Display
- Digital Anti-shock
- NTSC/PAL Selectable
- A/V Pre-amp Outputs, 2V
- Dimensions: 6.4" x 6.2" x 2"



VDVD-200

Half-DIN DVD Player w/ SD & USB Readers

- Playback from 4GB SD, 4GB USB Drive
- Slot Loading DVD Drive
- In-Dash, Floor, & Console Mounting Brackets Included
- Flash Memory for Last Position Recall
- Remote Control & IR Repeater Included
- OSD On Screen Display
- Digital Anti-shock
- NTSC/PAL Selectable
- A/V Pre-amp Outputs, 2V
- Dimensions: 6.4" x 6.2" x 2"



OVERHEAD SOLUTIONS

VCM-121DGR – Grey

VCM-121DBG – Beige

Ceiling Mount DVD Entertainment System w/ 12.1" LCD



- Low Reflection, High Resolution Digital TFT-LCD Monitor
- Car-Spec DVS DVD Drive for Extreme Temperature Exposure
- Video Playback from DVDR/RW or CDR/RW of DivX, XviD, MP3, & MP4
- Playback from 16GB SD, 16GB USB Drive
- 2 A/V Inputs for Auxiliary Sources
- Flash Memory for Last Position Recall
- 90°/90° Swivel Screen
- A/V Output for Multiple Component Integration
- NTSC / PAL Auto Selection
- 1,280 x 800 Screen Resolution
- 400 NIT Screen Brightness
- Dimensions: 12.25"w x 11.5"d x 1.5"h

VCM-123DGR – Grey

VCM-123DBG – Beige

Ceiling Mount DVD Entertainment System w/ 12.1" LCD



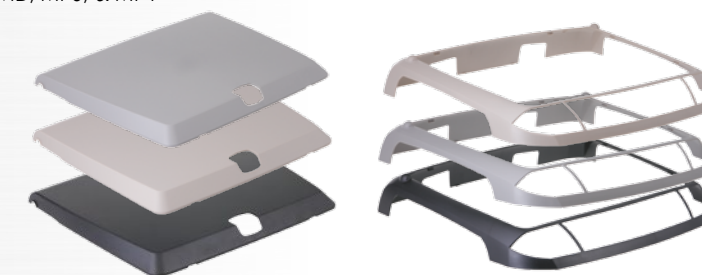
- Low Reflection TFT-LCD Monitor
- Car-Spec DVS DVD Drive for Extreme Temperature Exposure
- Video Playback from DVDR/RW or CDR/RW of DivX, XviD, MP3, & MP4
- Playback from 4GB SD, 4GB USB Drive
- Touch-Sense Front Panel Controls
- 180°/90° Swivel Screen
- Flash Memory for Last Position Recall
- A/V Output for Multiple Component Integration
- 2 A/V Input for Auxiliary Sources
- NTSC / PAL Auto Selection
- 4:3 Full Screen Aspect Ratio
- 800 x 600 Screen Resolution
- 330 NIT Screen Brightness
- Dimensions: 15"w x 12.25"d x 2.5"h

VCM-111DXX

Ceiling Mount DVD Entertainment System w/ 11.2" LCD



- Interchangeable Color Skins (beige, black, grey)
- Color Matched Trim Rings for Sculptured Ceilings Included
- Car-Spec DVS DVD Drive for Extreme Temperature Exposure
- Video Playback from DVDR/RW or CDR/RW of DivX, XviD, MP3, & MP4
- Playback from 16GB SD, 16GB USB Drive
- 90°/90° Swivel Screen
- A/V Output for Multiple Component Integration
- 2 A/V Input for Auxiliary Sources
- Rear Panel RCA A/V Input for Game Console
- Rear Panel Play/Pause Control
- Flash Memory for Last Position Recall
- NTSC / PAL Auto Selection
- 800 x 480 Screen Resolution
- 400 NIT Screen Brightness
- Dimensions: 14.5"w x 12.5"d x 2.5"h



VCM-101GRMH (Grey)

VCM-101BGMH (Beige)

Ceiling Mount DVD Entertainment System w/ 10.3" LCD & DTV-MH TV Tuner



- High Definition Digital Panel w/ LED Backlighting
- Built-in ATSC-MH Tuner with Antenna
- Ultra Slim & Compact Design
- Car-Spec DVS DVD Drive for Extreme Temperature Exposure
- Video Playback from DVDR/RW or CDR/RW of DivX, XviD, MP3, & MP4
- Playback from 4GB SD, 4GB USB Drive
- Flash Memory for Last Position Recall
- Touch-Sense Front Panel Controls
- A/V Output for Multiple Component Integration
- A/V Input for Auxiliary Input
- NTSC / PAL Auto Selection
- 1,024 x 600 Screen Resolution
- 400 NIT Screen Brightness
- Dimensions: 12.25" w x 9" d x 2" h



VCM-14DGR (Grey)

VCM-14DBG (Beige)

Ceiling Mount DVD Entertainment System w/ 10.4" LCD



- Low Reflection TFT-LCD Monitor
- Car-Spec DVS DVD Drive for Extreme Temperature Exposure
- Video Playback from DVDR/RW or CDR/RW of DivX, XviD, MP3, & MP4
- Playback from 4GB SD, 4GB USB Drive
- Touch-Sense Front Panel Controls
- 180°/90° Swivel Screen
- Flash Memory for Last Position Recall
- A/V Output for Multiple Component Integration
- 2 A/V Input for Auxiliary Input
- Rear Panel RCA A/V Input for Game Console
- NTSC / PAL Auto Selection
- 4:3 Full Screen Aspect Ratio
- 640 x 480 Screen Resolution
- 350 NIT Screen Brightness
- Dimensions: 15" w x 12.25" d x 2.5" h



VCM-9DX

Ceiling Mount DVD Entertainment System w/ 9" LCD



- Interchangeable Color Skins (beige, black, grey)
- Car-Spec DVS DVD Drive for Extreme Temperature Exposure
- Video Playback from DVDR/RW or CDR/RW of DivX, XviD, MP3, & MP4
- Playback from 4GB SD, 4GB USB Drive
- Flash Memory for Last Position Recall
- A/V Input for Auxiliary Sources
- A/V Output for Multiple Component Integration
- NTSC / PAL Auto Selection
- 800 x 480 Screen Resolution
- 400 NIT Screen Brightness
- Dimensions: 11" w x 9.75" d x 2.5" h



VCM-151

Ceiling Mount 15.2" LCD Monitor

- Low Reflection TFT-LCD Monitor
- 2 RCA A/V Inputs for Auxiliary Source
- Single Channel 8-LED IR Transmitter (use VHP-10S or VHP-11S)
- NTSC / PAL Auto Selection
- 4:3 Full Screen Aspect Ratio
- 1,024 x 768 Screen Resolution
- 400 NIT Screen Brightness
- Dimensions: 15.75" w x 14.75" d x 2" h



1502GM

Vehicle Specific Trim Ring for VCM-151, Fits 2005 & Later GM SUVs

VCM-112

Ceiling Mount 11.2" LCD Monitor



- Interchangeable Color Skins (beige, black, grey)
- Color Matched Trim Rings for Sculptured Ceilings Included
- A/V Input for Auxiliary Sources
- 90°/90° Swivel Screen
- NTSC / PAL Auto Selection
- 800 x 480 Screen Resolution
- 400 NIT Screen Brightness
- Dimensions: 14.5" w x 12.5" d x 2.5" h



VCM-100GRMH (Grey)

VCM-100BGMH (Beige)

Ceiling Mount 10.3" LCD Monitor w/ DTV-MH TV Tuner



- High Definition Digital Panel w/ LED Backlighting
- Built-in ATSC-MH Tuner with Antenna
- Ultra Slim & Compact Design
- Playback from 4GB SD, 4GB USB Drive
- Flash Memory for Last Position Recall
- Touch-Sense Front Panel Controls
- A/V Input for Auxiliary Sources
- A/V Output for Multiple Component Integration
- NTSC / PAL Auto Selection
- 1,024 x 600 Screen Resolution
- 400 NIT Screen Brightness
- Dimensions: 12.25" w x 9" d x 2" h



VCM-108GR (Gray) VCM-108BG (Beige)

Ceiling Mount 10.4" LCD Monitor



- 230°/90° Swivel Screen
- A/V Input for Auxiliary Source
- Rear Panel RCA A/V Input for Game Console
- NTSC / PAL Auto Selection
- 4:3 Full Screen Aspect Ratio
- 800 x 600 Screen Resolution
- 350 NIT Screen Brightness
- Dimensions: 14.5" w x 12.5" d x 2.5" h



VHD-9GR (Gray), VHD-9GRDK (Dark Gray), VHD-9BG (Beige), VHD-9BK (Black)
 1 Pair Universal Replacement Headrests Pre-Loaded w/ 8.8" TFT-LCD Touch Screen, DVD Player, & Headphones



- Side Slot-Loading DVD Player In Each Headrest
- Playback from DVDR/RW or CDR/RW of DivX, XviD, MP3, or MP4
- Playback from 16GB SD, 16GB USB Drive
- Independent 900Mhz. RF 2-ch. Headphone Transmitter
- 2 RF 2-ch. Padded Headphones Included
- RCA A/V Output for Auxiliary Source or Opposite Headrest
- Selectable DVD Mode or A/V Input from Opposite Headrest
- Hardwired Headphone Jack

- NTSC / PAL Auto Selection
- Independent Remote Controls
- 7/16" Pole Diameter w/ 5/8" Adapters
- 4" ~ 8" Pole Width Adjustment
- 480 x 234 Screen Resolution
- 400 NIT Screen Brightness
- Dimensions: 12"w x 5"d x 9"h

VH-91GR (Gray)
 VH-91GRDK (Dk. Gray)
 VH-91BG (Beige)
 VH-91BK (Black)



Universal Replacement Headrest Pre-Loaded w/ 9" TFT-LCD

- High Resolution & Low Reflection TFT-LCD Monitor
- 2 A/V Input for Auxiliary Sources
- Dual Channel IR Transmitter
- Hardwired Headphone Jack
- NTSC / PAL Auto Selection
- 3/8" ~ 5/8" Pole Diameters
- 4.5" ~ 8.25" Pole Width Adjustment
- 640 x 234 Screen Resolution
- Panel Brightness: 400 NIT
- Dimensions: 11"w x 8.5"h x 4"d



VHR-72IR
 7" Dual Channel IR Headrest Monitor

- Two Auxiliary A/V Input
- Dual Channel IR Transmitter
- Wired Headphone Output
- Low Reflection TFT-LCD Monitor
- Ultra Bright LED Backlighting
- Selectable Aspect Modes
- Preset/Manual Image Control
- Dimmer Control
- Remote Control
- NTSC/PAL Selection
- 480 x 234 (16:9) Image Resolution
- Dimensions: 6.875"w x 4.5"h x .75"d



VHR-76
 7" LCD Headrest Monitor

- 7" Amorphous Active Matrix TFT/LCD Monitor
- Ignition Power On/Off Optional
- Single RCA Video Input
- Selectable Aspect Modes
- NTSC/PAL Selection
- Sculptured Trim Ring Included
- Remote Control Included
- Self-Adhesive Butterfly Stand Included
- 480 x 234 Screen Resolution
- 16:9 Widescreen Aspect Ratio
- 400 NIT Panel Brightness
- Overall Dimension: 5" x 7" x 1"



VSV-78
 7" LCD SunVisor Monitor

- 7" Amorphous Active Matrix TFT/LCD Monitor
- Slim Sun Visor Mounting Tray Included
- Ignition Power On/Off Optional
- Single Video Input
- Selectable Aspect Modes
- Preset/Manual Image Control
- NTSC/PAL Selection
- Remote Control Included
- 480 x 234 Screen Resolution
- 16:9 Widescreen Aspect Ratio
- 400NIT Panel Brightness
- Overall Dimension: 5" x 9" x 1"



CUSTOM INSTALL MONITORS

CI-104NC
 10.4" Custom Install Monitor

- 10.4" TFT-LCD NC model
- On screen Display with Remote Control
- 2 Video Inputs
- NTSC/PAL Auto select
- 4:3 Viewing Aspect Ratio
- Resolution: 640*480
- Contrast Ratio: 250
- Brightness: 350cd/m2
- View Angle: 40/60/40/40
- Dimensions: 10.5" (L) x 7.4" (W) x 1.7" (H)



CI-112NC
 11.2" Wide Custom Install Monitor

- 11.2" TFT-LCD NC model
- On screen Display with Remote Control
- 2 Video Inputs
- NTSC/PAL Auto select
- 16:9 Viewing Aspect Ratio
- Resolution: 800*480
- Contrast Ratio: 350
- Brightness: 400cd/m2
- View Angle: 45/60/40/40
- Dimensions: 11" (L) x 7.7" (W) x 1.7" (H)

CI-150NC
 15.1" Custom Install Monitor

- 15.1" TFT-LCD NC model
- On screen Display with Remote Control
- 2 Video Inputs
- NTSC/PAL Auto select
- 4:3 Viewing Aspect Ratio
- Resolution: 800*600
- Contrast Ratio: 300
- Brightness: 400cd/m2
- View Angle: 50/60/70/70
- Monitor Dimensions: 15.4" (L) x 10.5" (W) x 1.8" (H)

HEADPHONES

VHP-10

Foldable Single Channel IR Wireless Headphone

- EVA hard carrying case included
- Foldable Ear Pads for Compact Storage
- On/Off Switch Saves Battery Life
- Auto Power Off Function
- Auto Mute Function
- Variable Volume Control
- ALC Auto Level Control
- Works w/ VHP-22



VHP-11

Swivel Ear Pad Single Channel IR Wireless Headphone

- Adjustable Headphone Straps
- Ear Pads Fold Flat for Seat Pocket Storage
- EVA hard Carry Case Included
- MP-3 Player Input Via 3.5mm Jack
- On/Off Switch Saves Battery Life
- Auto Power Off Function
- Auto Mute Function
- Variable Volume Control
- ALC Auto Level Control
- Replacement for VHP-22



VHP-12

Swivel Ear Pad Dual Channel IR Wireless Headphone

- Adjustable Headphone Straps
- Channel Selectable From Each Headphone
- Ear Pads Fold Flat for Seat Pocket Storage
- EVA hard Carry Case Included
- MP-3 Player Input Via 3.5mm Jack
- On/Off Switch Saves Battery Life
- Auto Power Off Function
- Auto Mute Function
- Variable Volume Control
- ALC Auto Level Control



VHP-22

2 Swivel Ear Pad Single Channel IR Wireless Headphones with Transmitter

- Stereo Audio IR Transmitter
- Adjustable Headphone Straps
- Ear Pads Fold Flat for Seat Pocket Storage
- EVA hard Carry Case Included
- MP-3 Player Input Via 3.5mm Jack
- On/Off Switch Saves Battery Life
- Auto Power Off Function
- Auto Mute Function
- Variable Volume Control
- ALC Auto Level Control
- VHP-11 Replacement headphone



VHP-900

Swivel Ear Pad 2-Ch RF 900MHz Wireless Headphone

- Channel Selectable From Each Headphone
- 100ft. Operational Distance
- Adjustable Headphone Straps
- Ear Pads Fold Flat for Seat Pocket Storage
- EVA hard Carry Case Included
- MP-3 Player Input Via 3.5mm Jack
- On/Off Switch Saves Battery Life
- Auto Power Off Function
- Auto Mute Function
- Variable Volume Control
- ALC Auto Level Control
- Replacement for VHP-9002



VHP-9002

2 Swivel Ear Pad 2-Ch RF 900MHz Wireless Headphones with Transmitter

- Dual Stereo Audio Inputs
- Channel Selectable From Each Headphone
- 100ft. Operational Distance
- Adjustable Headphone Straps
- Ear Pads Fold Flat for Seat Pocket Storage
- EVA hard Carry Case Included
- MP-3 Player Input Via 3.5mm Jack
- On/Off Switch Saves Battery Life
- Auto Power Off Function
- Auto Mute Function
- Variable Volume Control
- ALC Auto Level Control
- VHP-900 Replacement headphone



REAR VIEW CAMERAS

VLP2-CSC – Chrome

VLP2-CSB – Black

License Plate Frame w/ Night Vision Camera, Back-Up Sensors, On-Screen Distance Gauge, & Proximity Alerts

- U.S. Patent #7,106,183 B2
- 3 Object Sensors w/ Proximity Alert
- 1/4" CCD Color Camera
- 0.5 LUX Low Light Lens
- Waterproof Camera Housing
- Vertically Pivoting Camera Housing
- 7' Effective Viewing Distance
- 130° Capture Angle
- 8 IR LEDs for Night Viewing
- On-Screen Distance Gauge
- Inconspicuous Speaker Housing for Alerts
- RCA Video Output
- Cast Steel Alloy Frame
- Reversed Image
- 640 x 480 Capture Resolution



VLP-1CA

Chrome License Plate Frame with Camera

- Chrome Finish on ABS License Plate Frame
- Vertically Pivoting Camera Housing
- On-Screen Distance Gauge
- 1/4" CCD Wide View Color Camera
- 0.1 LUX Low Light Lens
- 163° Capture Angle
- RCA Video Output
- Reversed Image
- 648 x 488 Resolution



VCCD-4XS

1" Surface Mount Rear View Camera

- Vertically Pivoting Mounting Bracket
- Angled Surface Mounting Hardware Included
- On-Screen Distance Gauge
- 1/4" CCD Color Camera
- 0.1 Lux Low Light Lens
- 163° Capture Angle
- RCA Video Outputs
- Reversed Image
- 648 x 488 Resolution



VCCD-1

Water-Proof Surface Mount Rear View Camera

- Vertically Pivoting Stand for Angled Installation
- 8 IR LEDs for Night Viewing
- 1/3" Sharp CCD Color Camera
- 0.1 LUX Low Light Lens
- RCA Video Output
- Reversed Image
- 512 x 582 Resolution



VCCD-3

Surface Mount Rear View Bullet Camera

- Pivoting Stand for Angled Installations
- 8 IR LEDs For Night Viewing
- 1/4" Sharp CCD Color Camera
- 0.1 LUX Low Light Lens
- RCA Video Output
- Reversed Image
- 510 x 380 Resolution



VCCD-2

Flush Mount Rear View Bullet Camera

- 2.5" Threaded Housing & Locking Collars
- 1/3" Sharp CCD Color Camera
- 0.1 LUX Low Light Lens
- Weather-Resistant Housing
- RCA Video Output
- Reversed Image
- 510 x 492 Resolution



VDTV-MHU

Universal or Direct Control DTV-MH TV Tuner

- Touch Screen Control from NR, NRB, NRT, or NRBT Source Units
- Universal A/V RCA Outputs For Any Device
- Remote Control & IR Repeater Included
- Neodymium Magnetic Antenna Included
- Full DTV-MH 57-803MHz Receiving Frequencies
- Freeway Speed Signal Receiver
- Electronic Programming Guide for On-Screen Channel Surfing
- Favorite Channels Programming
- CCD Closed Captions Optional
- OSD Language Options: English, Spanish, & French
- 4:3 or 16:9 Aspect Ratio
- SDTV 720P Video Signal



VDTV-2U

Universal ATSC Digital TV Tuner

- Full DTV 57-803MHz Receiving Frequencies
- Electronic Programming Guide for On-Screen Channel Surfing
- Favorite Channels Programming
- CCD Closed Captions Optional
- OSD Language Options: English, Spanish, & French
- 4:3 or 16:9 Aspect Ratio
- SDTV 720P Video Signal
- RCA Video and Stereo Audio Outputs
- Antenna, Remote, & Receiving Eye Included



VVB-2

One In & Five Output Video Signal Booster

- Five Individual Output Trimmer Gain Controls
- Shielded Metal Housing For Noise Rejection
- Video Output Gain control



VFT-6

FM Transmitter

- Wireless 3 CH FM Transmitter
- Shielded Housing For Noise Rejection



VFM-5

PLL FM Modulator

- PLL Phase Lock Loop Tuner Outputs
- 8 Frequency Settings On Selectable DIP Switches
- Shielded Metal Housing For Noise Rejection



WEARABLES-P.O.P



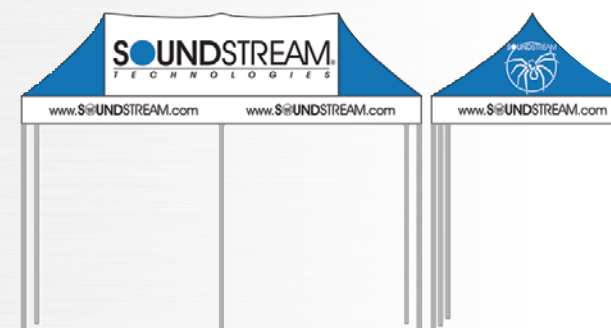
T-SHIRTS
M, L, XL, XXL



POLO SHIRTS
M, L, XL, XXL



1 SIZE FITS ALL
BALL CAP



10' x 20' POP-UP TENT



PROMOTIONAL BANNER



PROMOTIONAL POSTER



AUTHORIZED
DEALER
PLAQUE



SMALL WINDOW
DECAL



LARGE WINDSHIELD
DECAL

WWW.SOUNDSTREAM.COM



© 2011 SOUNDSTREAM TECHNOLOGIES, MONTEBELLO, CALIFORNIA, U.S.A.
ALL RIGHTS RESERVED. SPECIFICATIONS AND DESIGNS ARE SUBJECT TO
CHANGE WITHOUT NOTICE
PRINTED IN U.S.A.